

SUPPORT FOR SCHOOL SUCCESS: *INNOVATION TO ENHANCE ACCESS*

Support for School Success Partners:

Vancouver School Board

Vancouver Coast Health

Ray-Cam Co-operative Centre

Provincial Health Services Authority - RICHER Team

Vancouver Children First Initiative



Project Background

Winter
2014

Revisiting Inner
City and
CommunityLINK
resources

Issue: High volume
of complex students
entering K in Tier 1
schools

Spring
2014

VSB staff request
support of
community partners:

Vancouver Coastal
Health
Provincial Health
Services Authority –
RICHER
Ray-Cam
Co-operative

Primary Project Goals

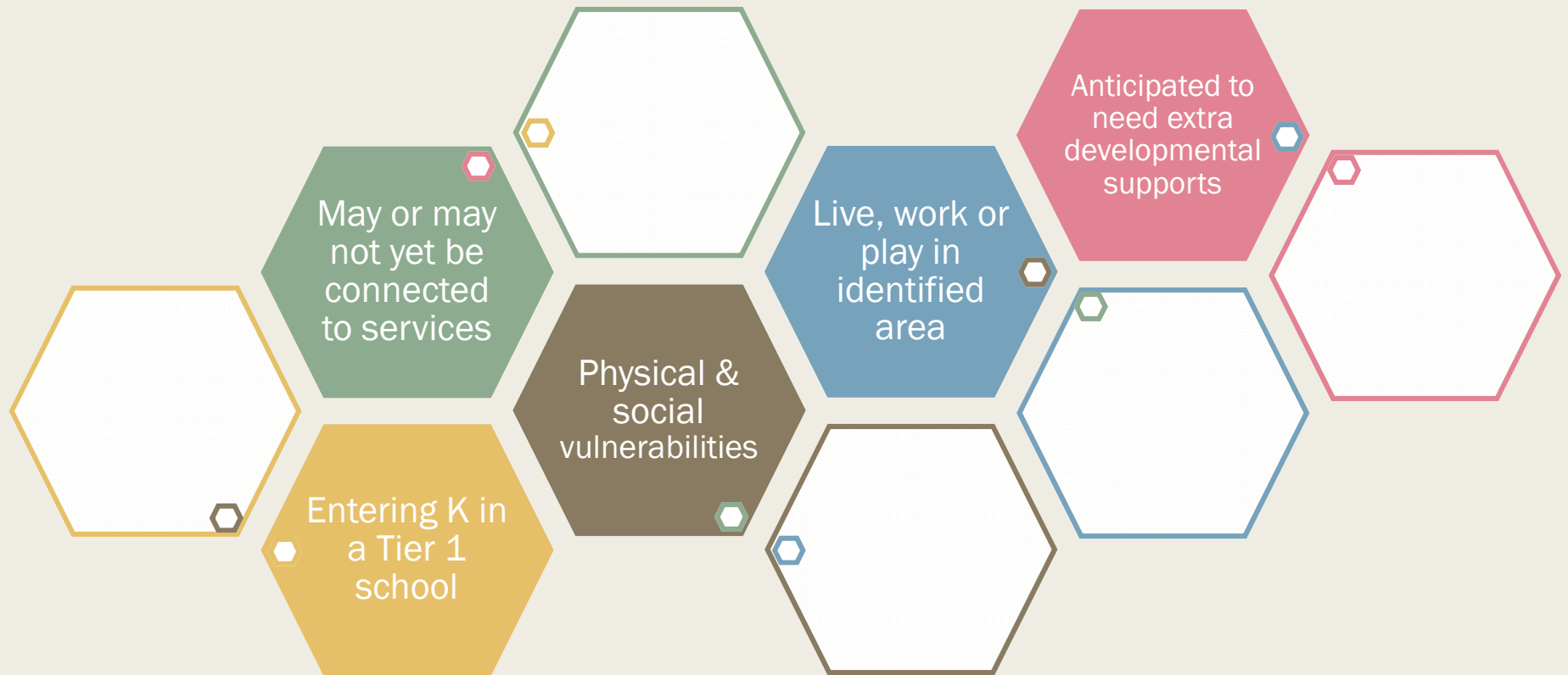
Support smooth K transition

Innovate process to engage families who face barriers to health care

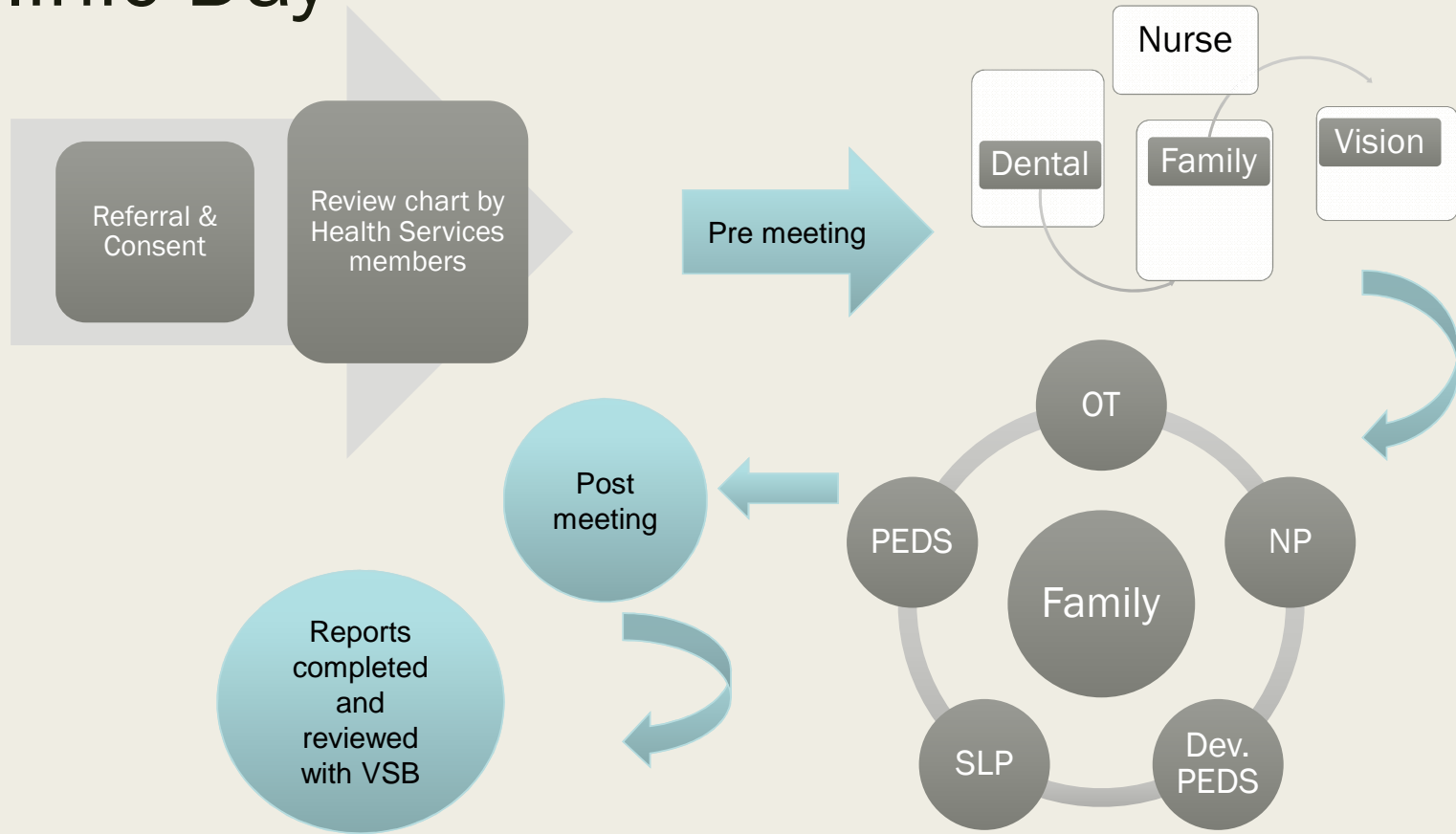
Improve coordination of healthcare services and information

Report information to VSB in a comprehensive and timely manner

Population Profile



Clinic Day



2016 HIGHLIGHTS



2016 Referral Sources

Source	Number of Referrals
Public Health staff	7
Ray-Cam Daycare Staff	9
RICHER staff	6
Preschools	9
Other	6
Total	37

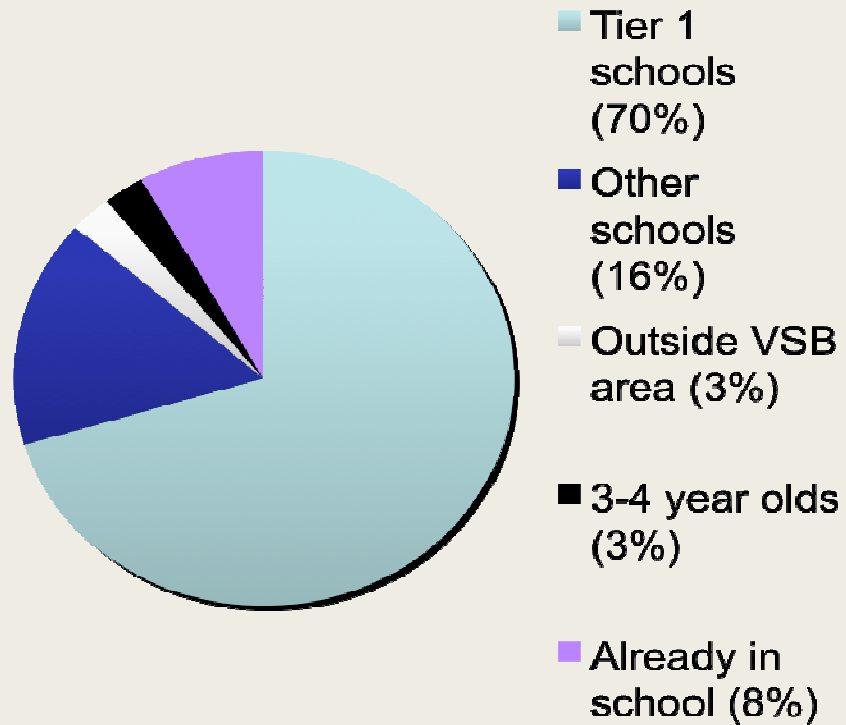
**Brokered trust through relationships was a key factor for success in family participation*

**95% of clients booked, were seen by the end of the project in 2016.*

2016 Health Services Summary

Discipline	# Children seen through program	# Referrals for follow up
Total Number	37	-
Public Health Nurse	37	20
Occupational Therapist	32	11
Speech Language Pathologist	29	17
Dental	32	22
Vision	34	16
Nurse Practitioner	37	4 (new to RICHER)
Pediatrician	33	13 (Sunny Hill) 3 (Specialized Pediatric)

Schools Profile 2016

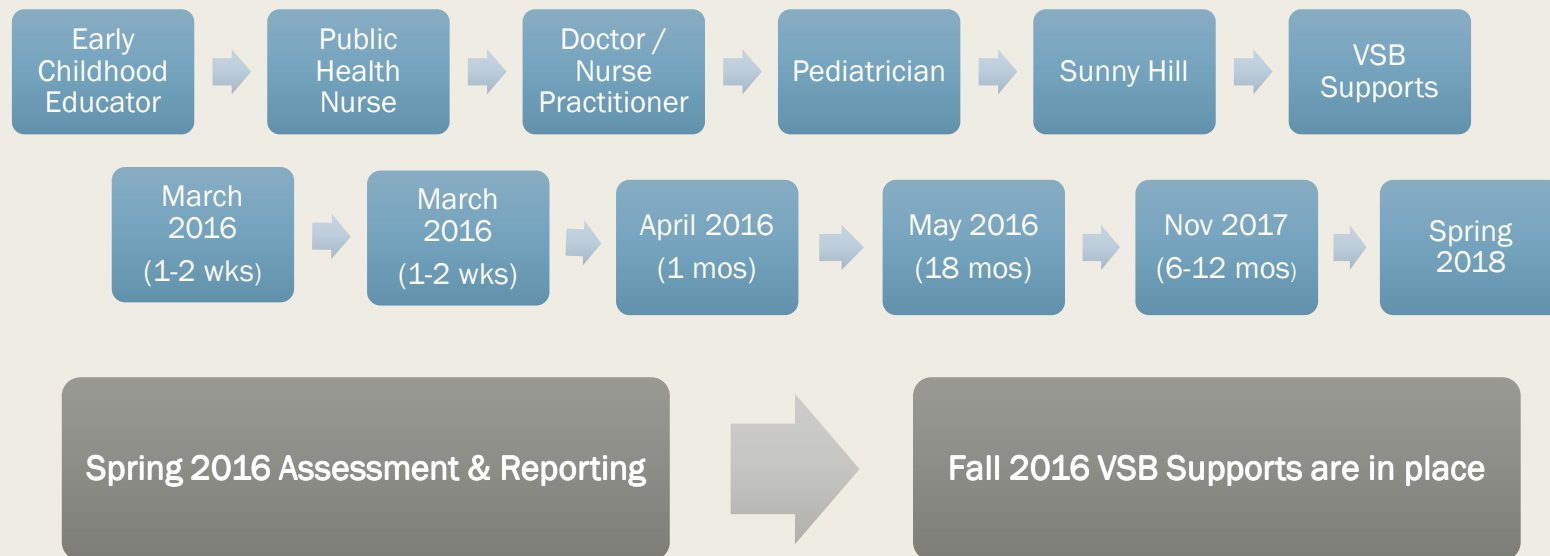


VSB Implications 2016

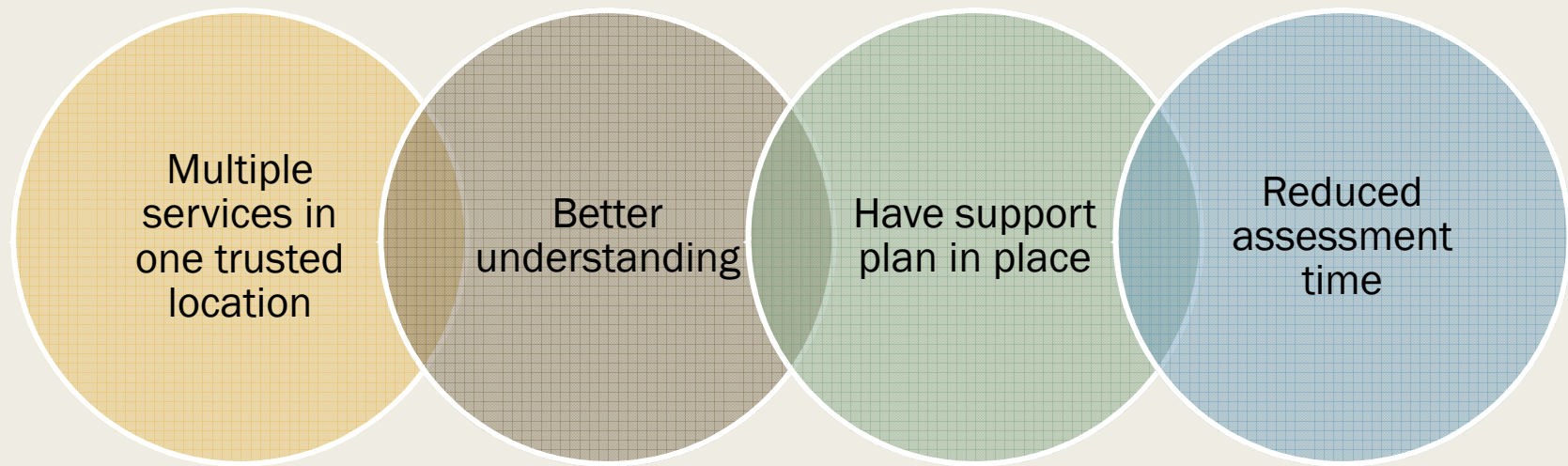
Ministry of Education Designations Assigned:		
D designations (Chronic Health)	6	16%
R designations (Students Requiring Behaviour Support or Students with Mental Illness)	4	11%
Flagged For Monitoring	25	68%
Other	2	5%
Total	37	100%

Note: Designations as of Oct 2016

Rapid Mobilization



Benefits for Child and Family



Benefits for Schools



2017 Support for School Success

- New clinic starting January 2017 – monthly until June
- Both Vancouver Coastal Health and RICHER are considering expanding this model
- Recently identified by the Provincial Office of the Early Years as a promising practice

Thank you!

