

The Planning Process & Consultation

The Concept Design Plan for Kitsilano Secondary builds on previous extensive consultation, including the Community Visioning event in February 2009 and additional PAC, teacher and student consultations.

The Community Visioning event highlighted areas of both consensus and divergence. Areas of consensus included focusing on students and teachers as priority users, prioritizing sustainability and health, retaining the heritage façade of the 1927 building, ensuring the least amount of disruption to students and teachers, and shared use with the Kitsilano Community Centre.

Areas of divergence included the extent to which the 1927 Block will be preserved, the utilization of portables, and which areas of the school will be accessible for the community.

In February 2009, the PAC confirmed the six following recommendations to the VSB:

1. Ensure the best possible educational facilities – first and foremost Kitsilano Secondary is a people-focused place with students and teachers as priority users.
2. Heritage retention – retain and seismically upgrade the 1927 Block.
3. Space allocations outside the Ministry of Education's standards need to be included in light of Kitsilano Secondary's role as a community facility.
4. Minimize disruption during construction – health and education should not be compromised.
5. Green Design – the school should meet or exceed LEED® Gold.
6. Innovative Ideas – the school should be designed for the best possible educational, recreational and community use.



Kitsilano Secondary School
RENEWAL PLAN



CITY SPACES
Planning | Project Management | Applied Research

Planning Principles

- 1. Create a Model 21st Century School**
...that exemplifies best practices in student-focused, adaptable learning environments.
- 2. Protect and Enhance the School Spirit and Sense of Place**
...during construction and within the renewed school.
- 3. Plan for Sustainability**
...by identifying opportunities for reuse and introducing new technologies, approaches and “green” practices.
- 4. Ensure a Safe and Secure School Facility**
...that is welcoming and inclusive, while being efficient to supervise and structurally resilient.
- 5. Improve the Health and Well Being of the Entire School Community**
...by creating a healthy school facility, and providing space for mental reprieve and physical fitness.
- 6. Create Stronger Connections with the Kitsilano Community Centre**
...through the site design and provision of shared program space.
- 7. Plan the School as a Neighbourhood Learning Centre**
...by maximizing opportunities for community use and partnerships without compromising the learning environment or safety of the school community.
- 8. Respect the 1927 Heritage Block**
...and seek to retain the iconic and valued elements of this building in the renewed school.
- 9. Provide Great Outdoor Space**
...for year-round use by students and the whole community.
- 10. Plan for Implementation and Fiscal Viability**
...within the known budgets and time frames.
- 11. Plan to Minimize Phasing and Construction Time**
...to reduce disruption to the school community as much as possible.

These planning principles were developed by drawing on the community consultation process in 2009, and further discussion of the issues and opportunities by the KSPT.



The Planning Process & Consultation

Formal work on the Concept Design Plan started in October 2009 with a view to completion in May 2010. A consultant team is developing the Concept Design Plan, with advice from the Kitsilano Secondary School Planning Team (KSPT)*.

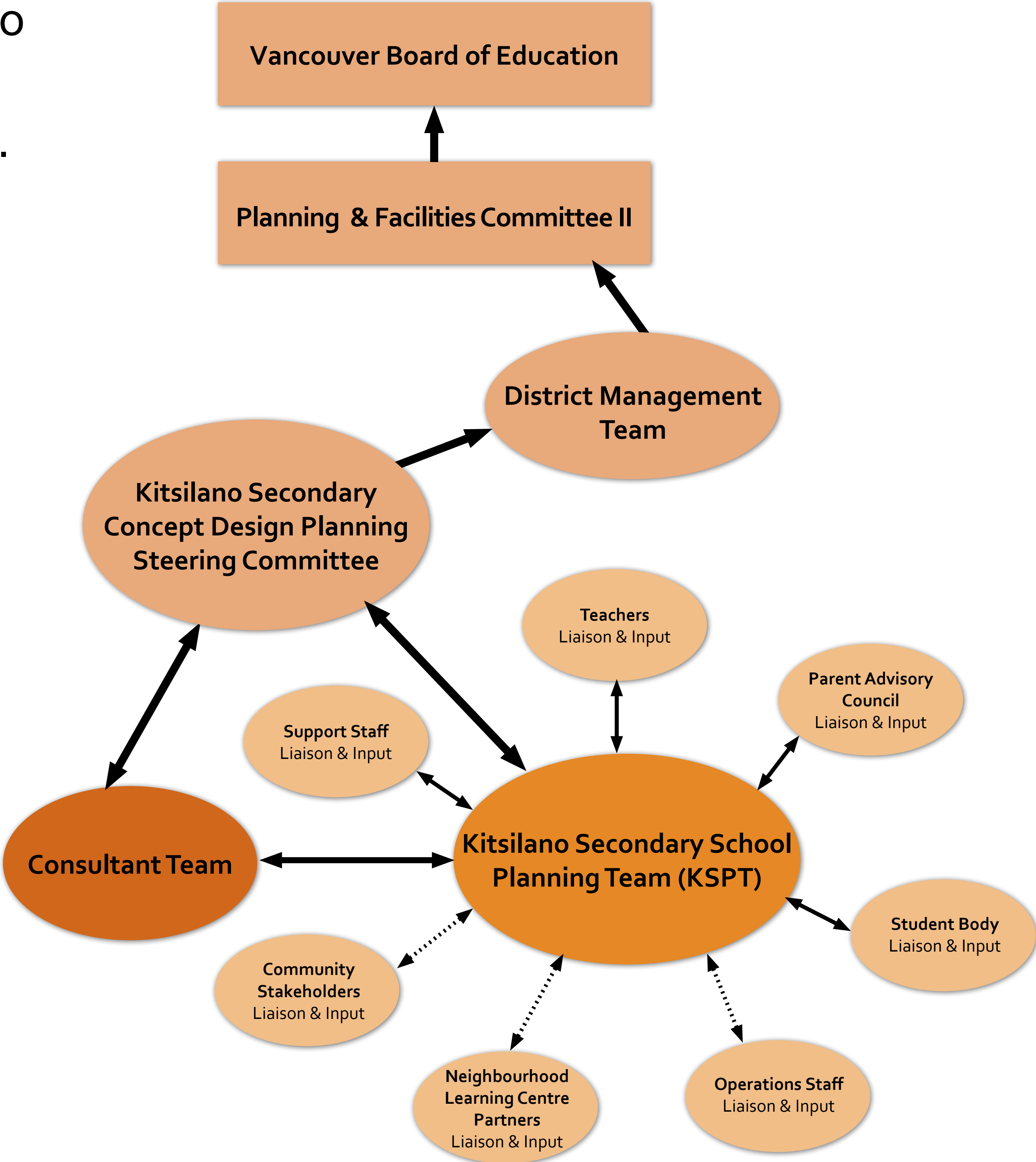
The advice of the KSPT and consultant team is submitted to a Steering Committee. This Steering Committee will report through the VSB's Management Team to the School Trustees.

Local residents, community organizations, key service providers and the City of Vancouver are also being engaged in the planning process through small group meetings, public events and online consultation.

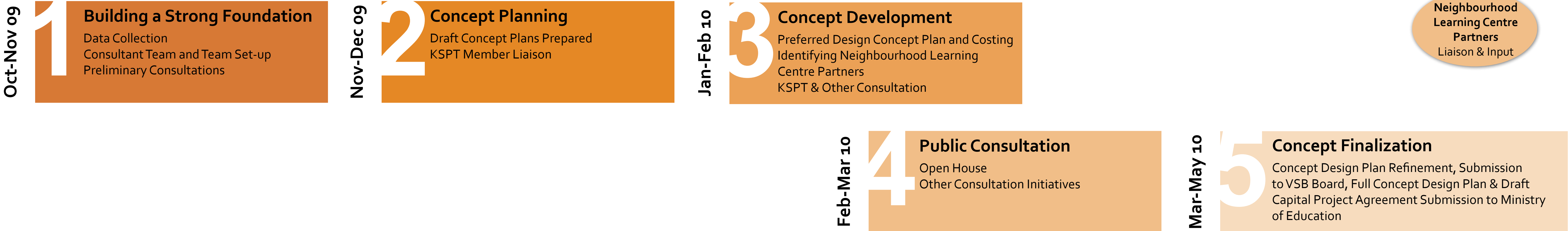
*The KSPT comprises teachers, students, parents and representatives from the school's administration and VSB.

Consultant Team

Project Managers CitySpaces Consulting Ltd	Mechanical Stantec
Architects DA Architects and Planners	Electrical MMM Group Limited
Structural Genivar	Costing Advicas Group Consultants Inc.



The Planning Process



Kitsilano Secondary School
RENEWAL PLAN