

Heritage: Existing Character-Defining Elements

To identify the important heritage characteristics of Kitsilano Secondary School, a Heritage Statement of Significance was produced in August 2008 by Commonwealth Historic Resource Management. This report outlined the historic significance of the school, its heritage value and the specific elements that contribute to the building's character. These characteristics include the following:

- Use of the building as a school
- Three-storey elevation featuring a dominant main facade on West 10th Avenue
- Features of a simplified Tudor Revival / Collegiate Gothic style, including pointed arches, buttresses, and crenellated parapet
- Horizontal fenestration with centre-pivot windows, mostly with 3/4 single-pane glazing and original hardware
- Sign over the main entrance with the name of the school
- Double wood-paneled door at the entrance with nine panes each, fixed 18-pane transom, and original hardware
- Formal entrance at West 10th Avenue and stairways with rounded concrete walls and posts at the corners of the site
- Formally landscaped areas on the west, north and east side
- Trees and landscaping buffer along West 10th Avenue and West 12th Avenue



• A view over Burrard Inlet to the North Shore mountains



• Mostly intact spatial configuration of the 1927 building



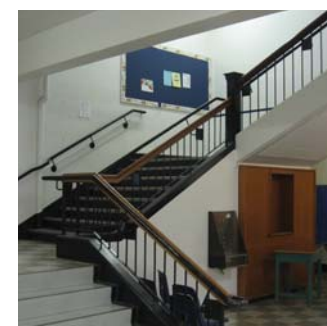
• Auditorium & stage with large single pane windows / blocked in openings, covered walkway with metal handrail



• Surviving millwork in the halls and classrooms, including baseboards, window framing, classroom built-ins and chalkboard surrounds



• Solid wood-paneled doors with wood surrounds and single-pane transoms



• Stairwells with wooden handrails, steel banisters and newel posts



• Intense natural lighting in single loaded corridor along north side of the building



• Spaces to display memorabilia such as portraits, class photographs, memorials and trophies



Heritage: Proposed Response

Using the Heritage Statement of Significance as a guide, the following measures will be taken:

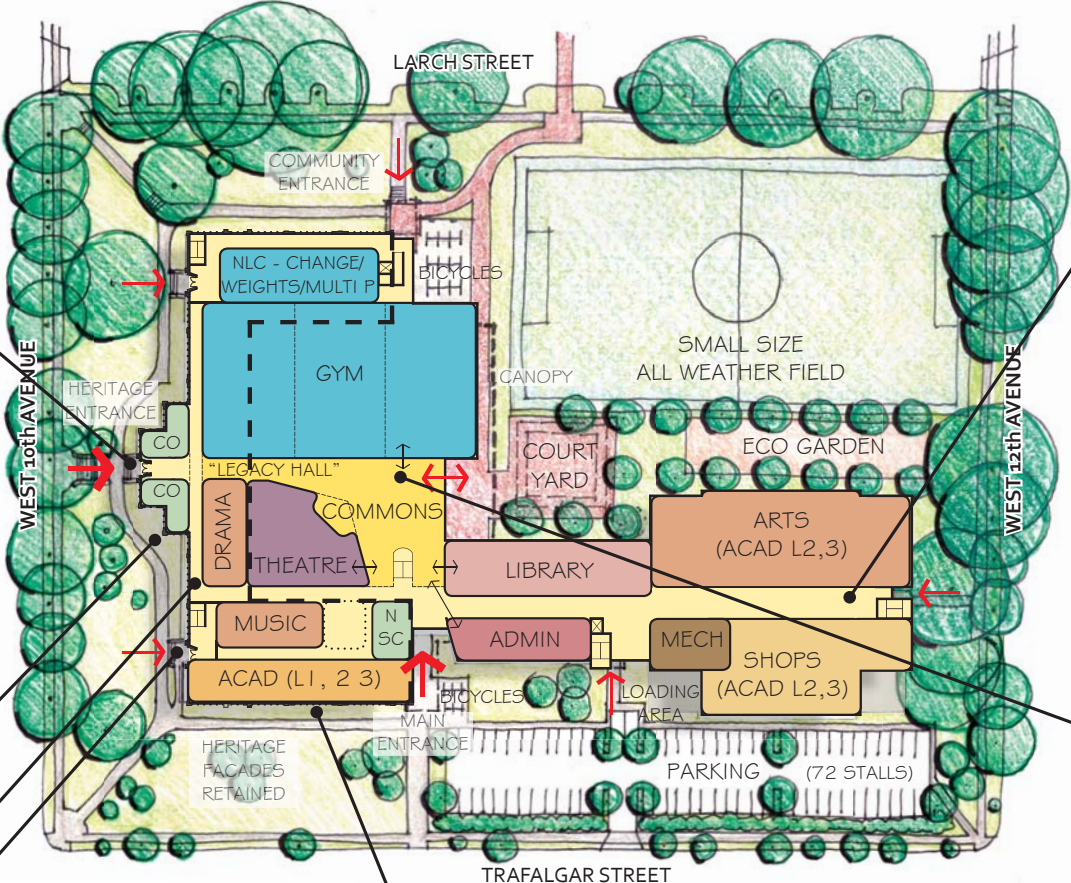
- Retention of the building as a Secondary School



• Retain sign over main entrance



• Retain three-storey east, north and west facades of the 1927 building (repair and repaint to original colour scheme)



- Retain high ceilings - same floor to floor height as existing



• Provide enhanced opportunities to display memorabilia / artifacts in "Legacy Hall"



• Reconstruct single loaded corridor behind north facade



• Retain double wood-paneled door at the entrances



• Retain and recondition horizontal wood frame, multi-pane windows



• Potential reuse of interior doors and wood surrounds



• Potential reuse of wooden handrails, steel banisters and newel posts



Heritage: Proposed Response

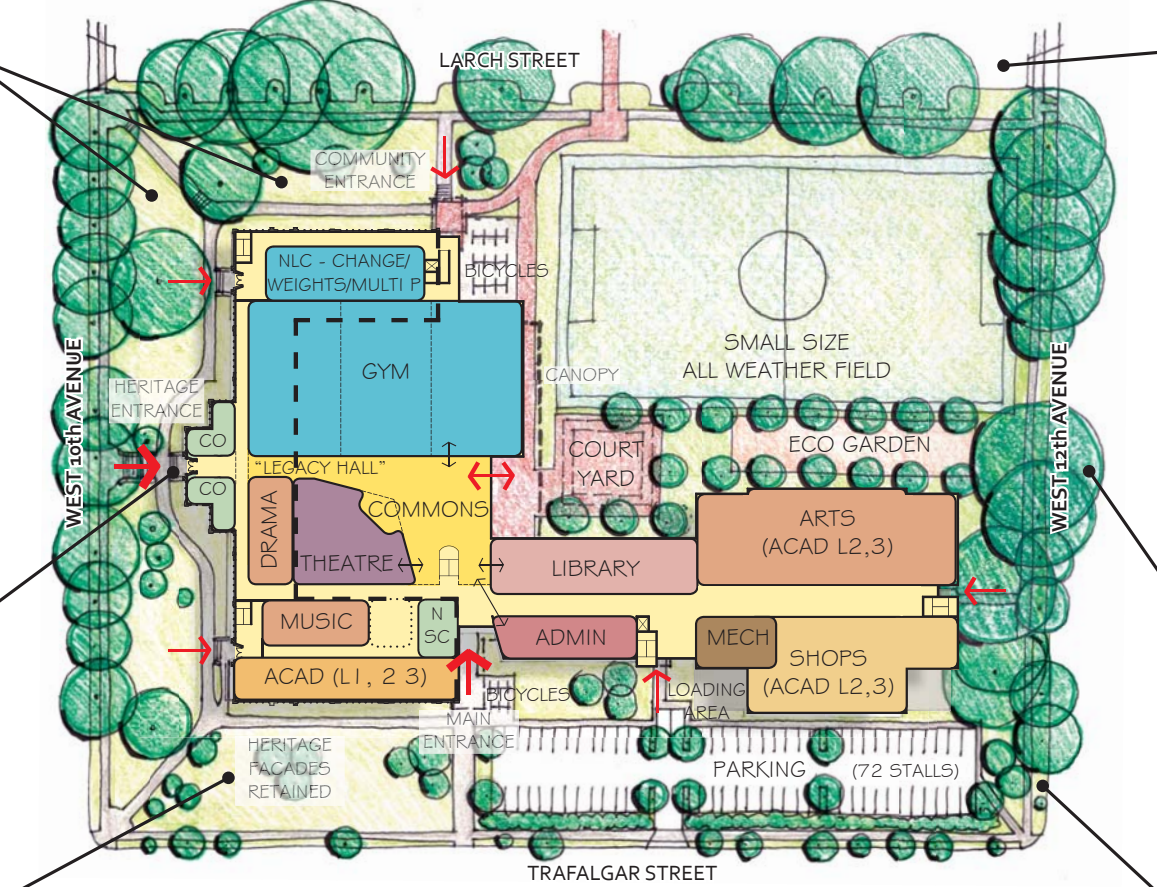
Using the Heritage Statement of Significance as a guide, the following measures will be taken:



• Retain landscaped areas on the east and northwest



• Retain formal entrance and stair features along West 10th Avenue



• Retain tree roadway that separates the school from the Kitsilano Community Centre



• Retain deciduous trees along the south sidewalk



• Relocate existing parking to allow planting of landscape consistent with east and north facades



• Retain trees and landscaping buffer along West 10th and West 12th Avenue

