

# Building Green

This board is intended to illustrate sustainable building features and practices that will be implemented at Kitsilano Secondary. These include:



Target : LEED Gold

**Operations**

- Environmentally friendly cleaning products
- Proper equipment commissioning
- Reduced waste water production

**Education**

- School recycling and materials sorting programs
- Using the building & grounds to teach sustainability

**Community**

- Integrate community partnerships
- Encourage alternative transportation

- Management of Stormwater on the site
- Increased outdoor open space

- Reduced number of vehicular parking stalls

- Highly insulated Walls and Roofs



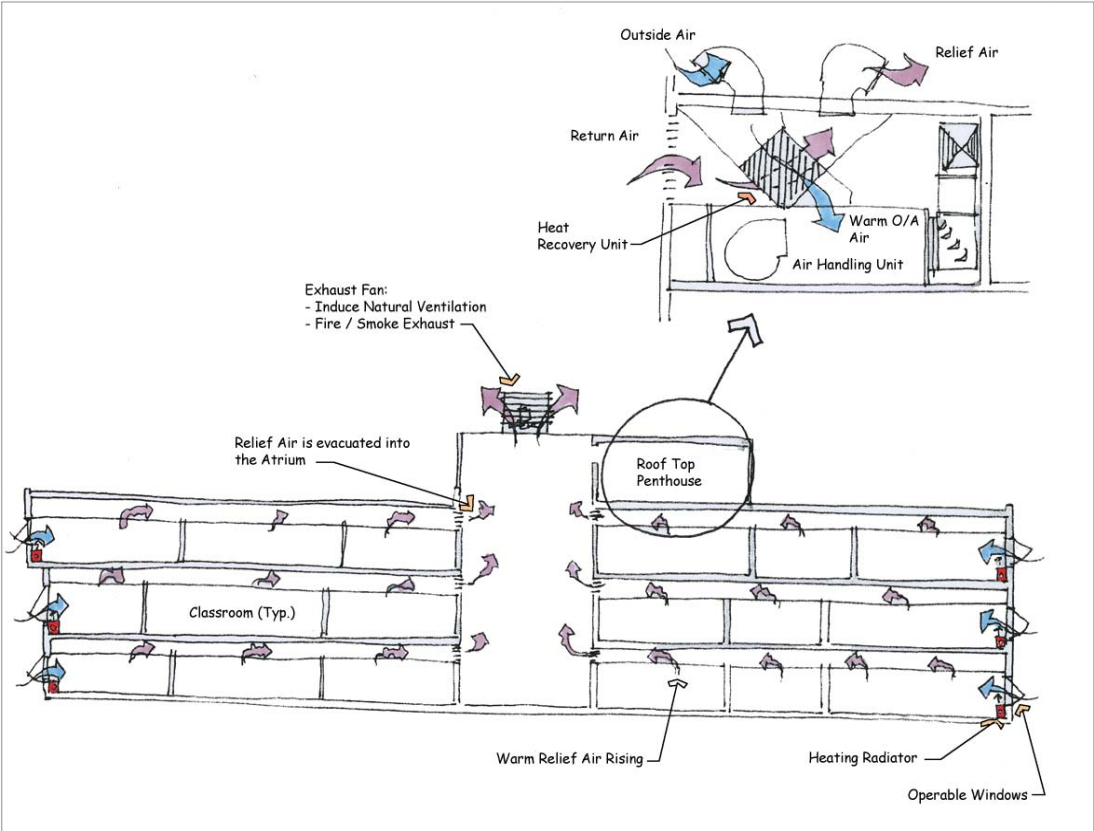
- Natural lighting within the school



- Reduced Light Pollution



- Reuse of 1927 facades: Walls and Windows



- Highly energy efficient mechanical systems
- High quality ventilation system



- Covered Bicycle Storage and Change Rooms



- Water Efficient Landscaping



- Over 75% of demolition and construction waste to be reused or recycled



- Building materials that emit low levels of VOC



- Building materials with high recycled content
- Building materials that are made locally



- Low Flow Plumbing Fixtures



- Low Energy Consuming Lighting



Kitsilano Secondary School  
RENEWAL PLAN

SUSTAINABLE FEATURES TO BE IMPLEMENTED

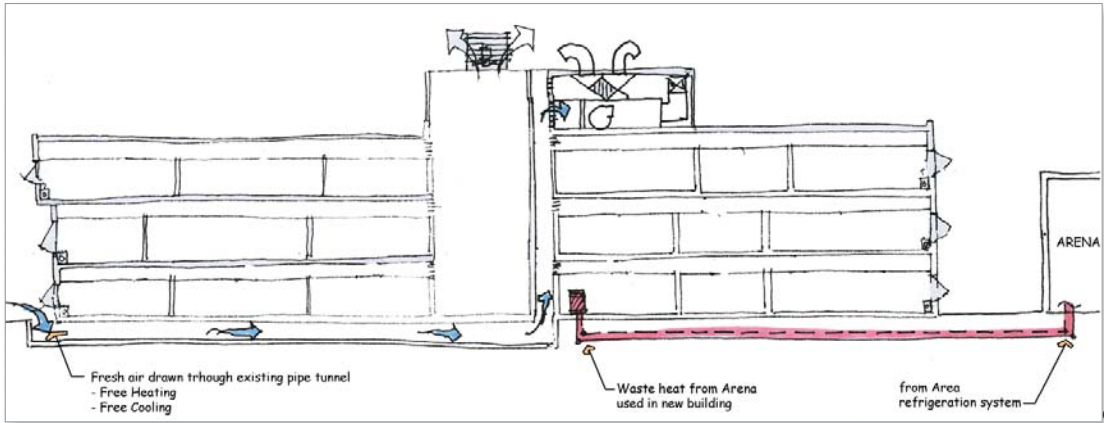


# Building Green

This board is intended to illustrate sustainable building features and practices that will be considered for implementation at Kitsilano Secondary. These include:



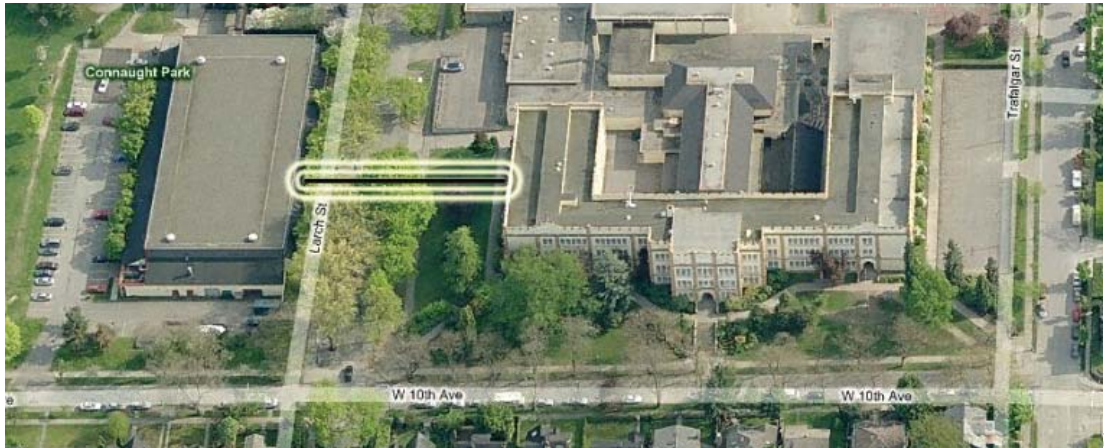
• Solar Heating and Electrical Panels



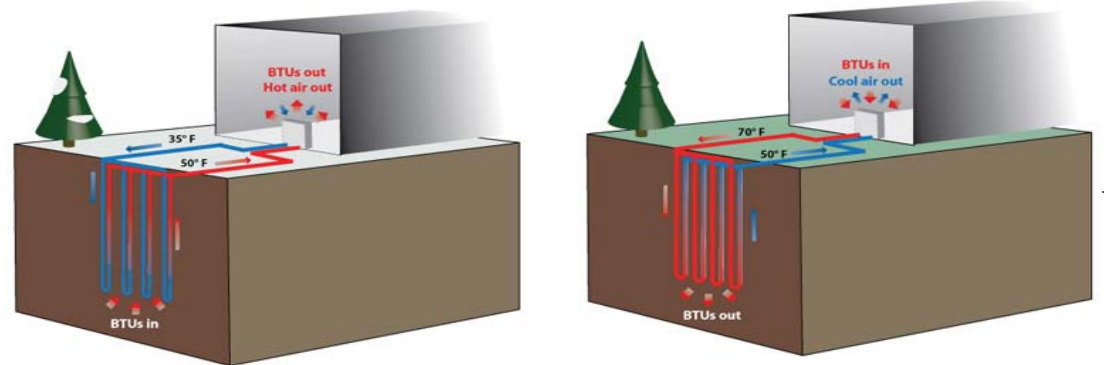
• Energy Exchange with Kitsilano Ice Rink



• Reuse of Wood and Steel Structural Elements



• Reuse of Existing Doors and Surrounds



• Geo-Exchange - Ground Source Heat Pumps



• Wood Certified by the Forest Stewardship Council

