

# UNIVERSITY HILL SECONDARY SCHOOL

**CIVIC ADDRESS: 3250 EAST MALL, VANCOUVER, BC**

**LEGAL DESCRIPTION: LOT F, DL 6494, GP1 NWD PLAN BCP35352      PID: 027-431-720**

## LIST OF DRAWINGS

### ARCHITECTURAL

CONTACT NAME: RON HOFFART, MAIBC  
 GRAHAM HOFFART MATHIASSEN ARCHITECTS  
 SUITE 203, 10190 152A STREET  
 SURREY, B.C. V3R 1J7  
 TELEPHONE (604) 581-8128  
 FAX (604) 581-8148

COVER SHEET  
 TOPOGRAPHIC SURVEY  
 SITE PLAN  
 MAIN AND UPPER FLOOR PLANS  
 BASEMENT AND PENTHOUSE FLOOR PLANS  
 ROOF PLAN

ELEVATIONS  
 BUILDING SECTIONS 1  
 BUILDING SECTIONS 2  
 SHADOW ANALYSIS

PHOTOS 3D MODEL - 7 PAGES  
 PHOTOS EXTERIOR - 2 PAGES  
 PHOTOS INTERIOR - 1PAGE

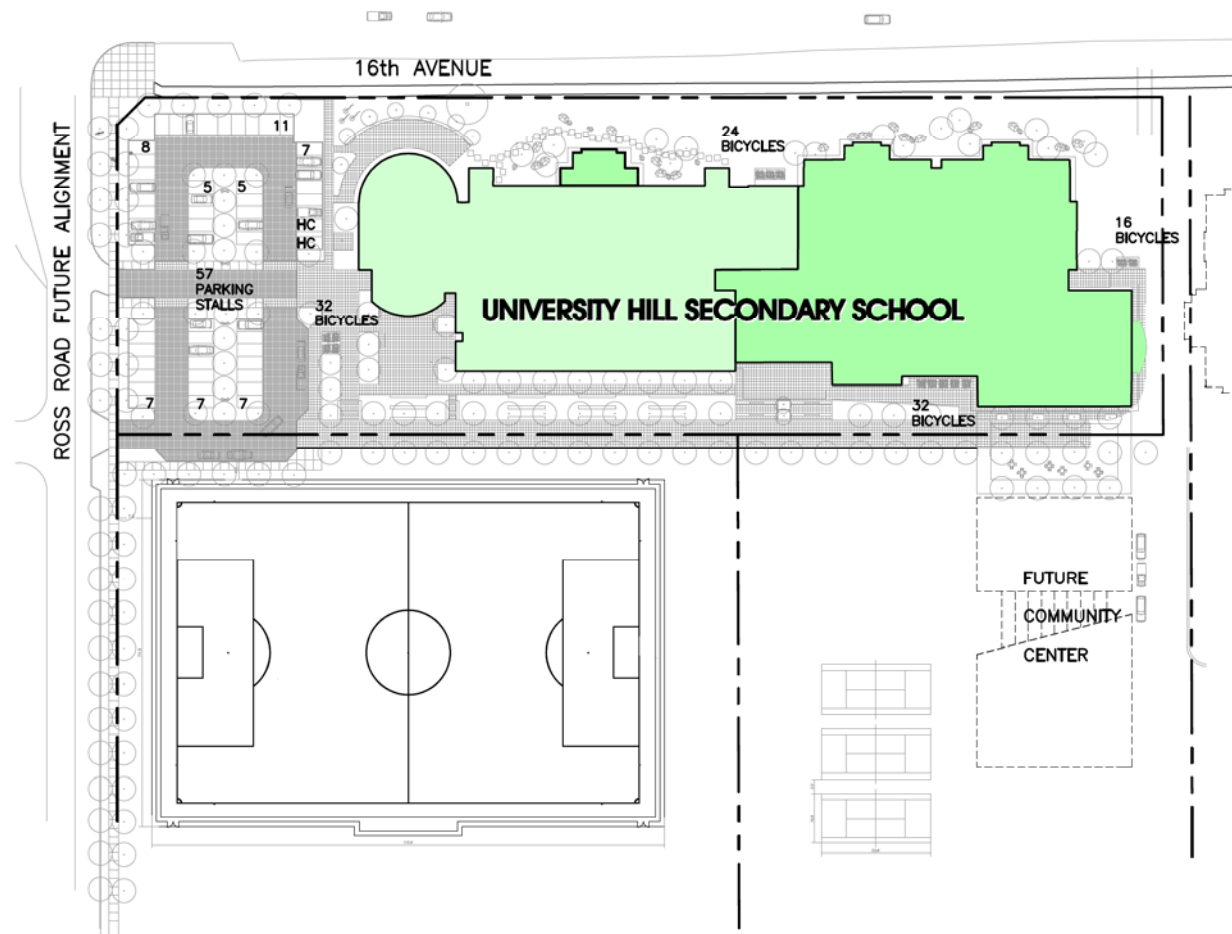
### LANDSCAPE

CONTACT NAME: MICHAEL PATTERSON, BCSLA  
 Perry + Associates  
 SUITE 200-1558 WEST 6th Ave.  
 VANCOUVER BC V6J 1R2  
 TELEPHONE: (604) 738-4118  
 FAX: (604) 738-4116

L-0 TREE REMOVAL/RETENTION PLAN  
 L-1.0 CONCEPTUAL LANDSCAPE SITE PLAN  
 L-1.1 LAYOUT PLAN  
 L-1.2 GRADING PLAN  
 L-2.0 LANDSCAPE SECTIONS  
 L-2.1 LANDSCAPE SECTIONS  
 L-2.2 LANDSCAPE SECTIONS  
 L-2.3 LANDSCAPE SECTIONS  
 L-2.4 LANDSCAPE SECTIONS  
 L-3.0 LANDSCAPE IMAGES

### CML

001 UTILITY KEY PLAN  
 002 SANITARY SEWER PLAN  
 003 WATER PLAN  
 004 STORM SEWER PLAN  
 005 STREET LIGHT PLAN  
 006 ELECTRICAL/TELECOM PLAN  
 007 GAS PLAN



## PROJECT STATISTICS

SITE AREA 16,504 SqM 1.65 Ha  
 BUILDING COVERAGE 7065 Sqm  
 PERCENT COVERAGE 43%

	EXISTING (SqM)	NEW (SqM)	TOTAL (SqM)
BASEMENT	574	0	574
MAIN	3295	3760	7055
UPPER	2246	1490	3736
MECH. PENTHOUSE	470	0	470
<b>TOTAL (SqM)</b>	<b>6585</b>	<b>5250</b>	<b>11835</b>
(TOTAL SqFT)	(70,880 SqFT)	(56,500 SqFT)	(127,390SqFT)

### SETBACKS

NORTH 9.718M  
 SOUTH 6.125M  
 EAST 3.587M  
 WEST 52.203M

BUILDING HEIGHT 13.375M (EXISTING)

**PARKING**      REQUIRED      REQUIRED      PROVIDED

STANDARD 2.5Mx5.5M      8'2"x18'6.125M      54  
 SMALL CAR 2.3Mx4.6M      7'6"x15'1"      NA  
 DISABILITY 3.7Mx5.5M      12'2"x18'      2

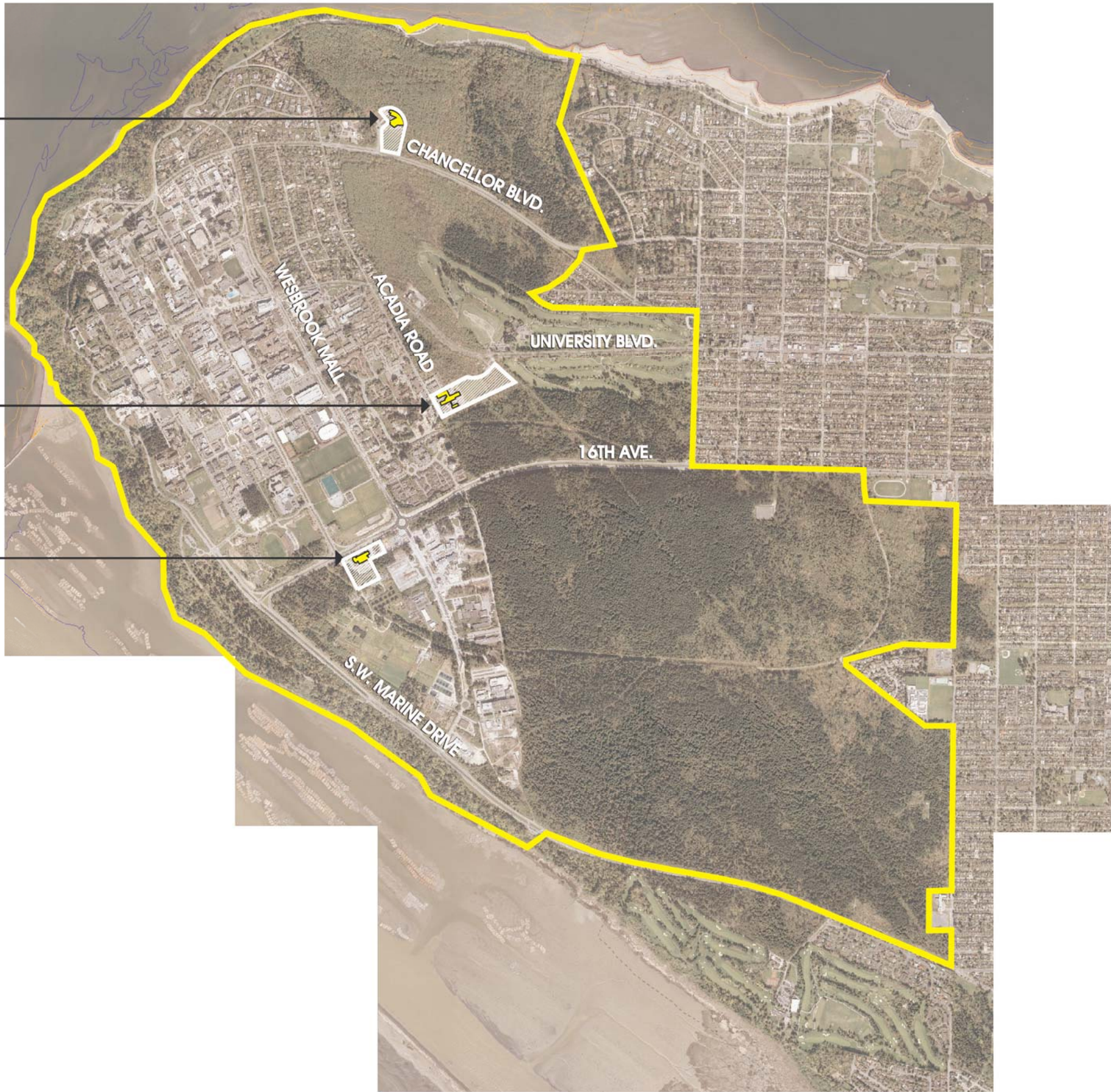
**TOTAL**                56

BICYCLES                104

**CHANCELLOR SITE**  
EXISTING UNIVERSITY HILL ELEMENTARY

**ACADIA SITE**  
EXISTING UNIVERSITY HILL SECONDARY  
FUTURE ELEMENTARY

**NRC SITE**  
FUTURE SECONDARY



DATE: FILENAME: G:\08-233-03 University Hill Secondary\08233-Catchment Area.dwg

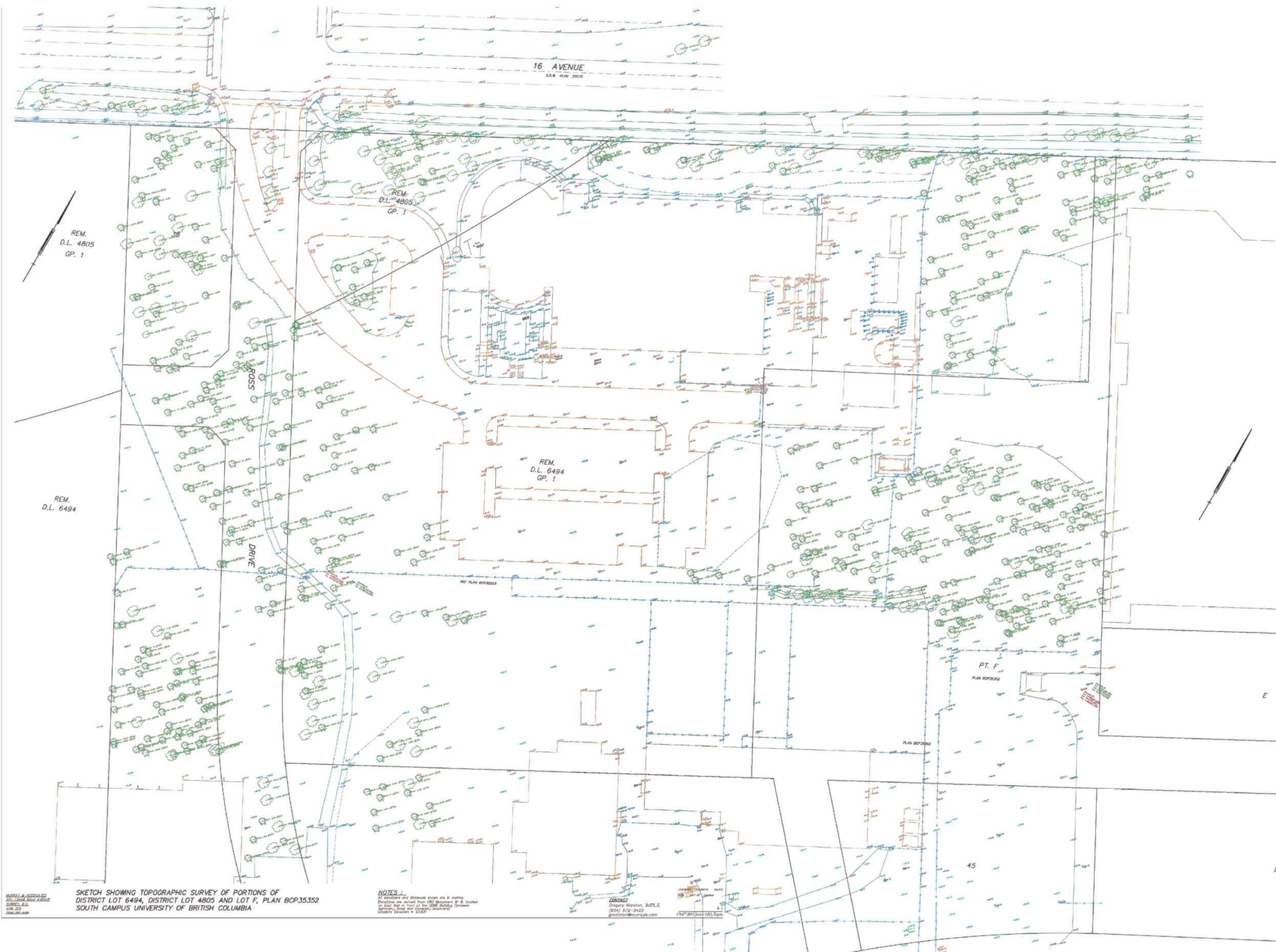
# UNIVERSITY HILL SECONDARY SCHOOL

**KEY PLAN**  
ISSUED FOR DP  
DATE: 27 Jan, 2010



**GHMA**  
GRAHAM HOFFART MATHIASEN ARCHITECTS

Suite 203  
10190 152A Street  
Surrey, B.C. V3R 1J7  
Tel. (604) 581.8128  
Fax (604) 581.8148



SKETCH SHOWING TOPOGRAPHIC SURVEY OF PORTIONS OF DISTRICT LOT 6494, DISTRICT LOT 4805 AND LOT F, PLAN BCP35352 SOUTH CAMPUS UNIVERSITY OF BRITISH COLUMBIA

**NOTES:**  
 All dimensions and distances shown are in meters.  
 Elevations are derived from CGD benchmark B-1E located on East Hill in front of the OBC building between Spinnaker Road and 122nd Street.  
 Gravity direction = 323.24°

**CONTACT:**  
 Gregory Morrison, S.M.L.S.  
 (604) 272-5423  
 gmorrison@surveysa.com

1/2" = 100' (1:1250)

DATE: 01/08/2010 01:08:33 AM University Hill Secondary\08233-043\_Survey.dwg

# UNIVERSITY HILL SECONDARY SCHOOL

**SURVEY PLAN**  
 ISSUED FOR DP  
 DATE: 27 Jan, 2010



**GHMA**  
 GRAHAM HOFFART MATHIASEN ARCHITECTS

Suite 203  
 10190 152A Street  
 Surrey, B.C. V3R 1J7  
 Tel. (604) 581.8128  
 Fax (604) 581.8148