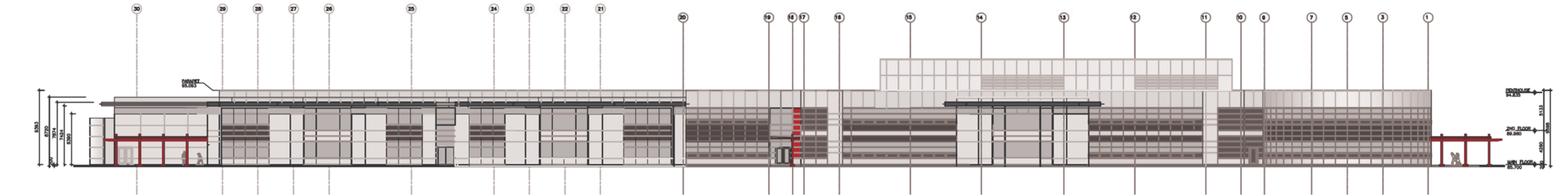
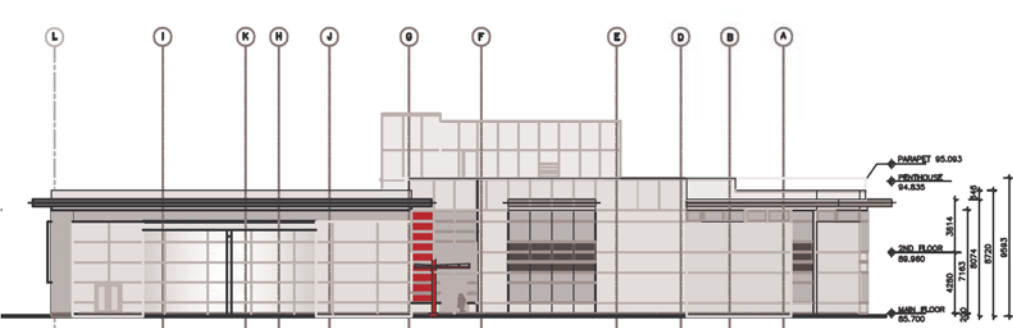


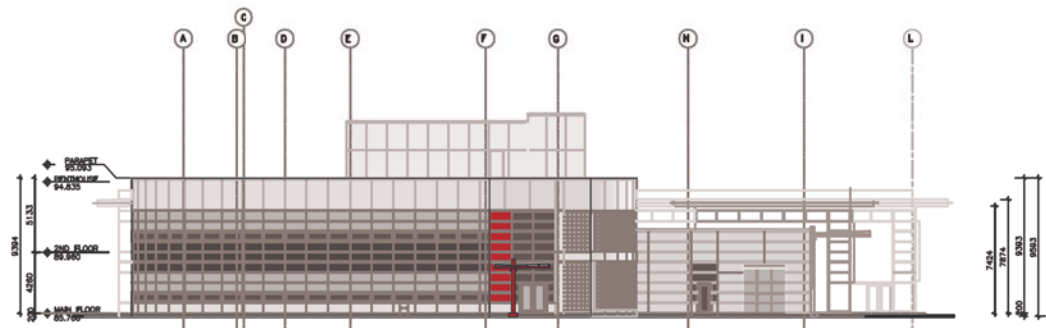
**SOUTH ELEVATION**



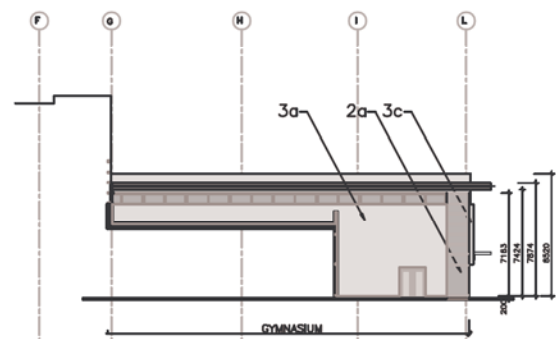
**NORTH ELEVATION**



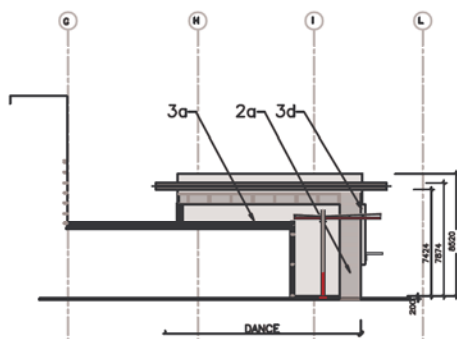
**EAST ELEVATION**



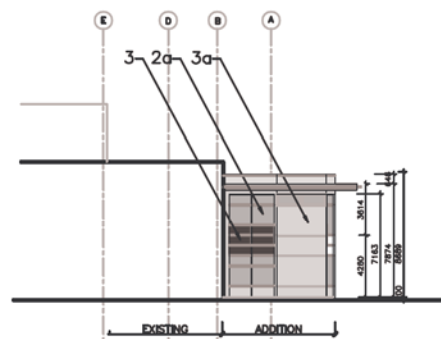
**WEST ELEVATION**



**WEST ELEVATION GYM.**



**WEST ELEVATION DANCE**

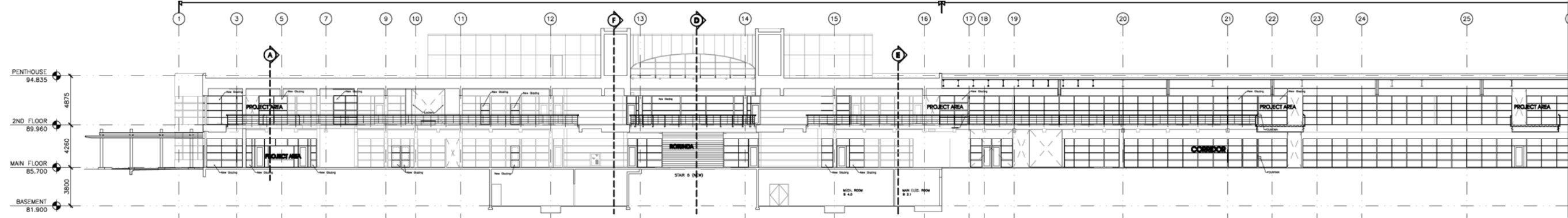


**WEST ELEVATION LIBRARY**

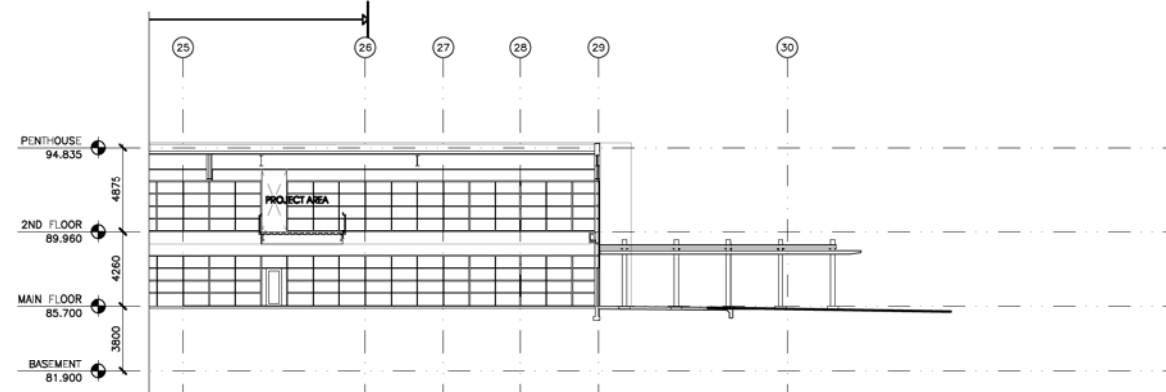
**EXTERIOR MATERIALS LEGEND**

1. EXIST'G GLAZING, C.W. ( TINTED, BLACK )
- 1a. EXIST'G SPANDREL PANEL, C.W. ( GLAZED, BLACK )
- 1b. EXIST'G CLADDING, C.W. ( METAL COMPOSITE, WHITE, 'REYNOBOND, ACCUMET 2007' )
- 1c. EXIST'G CLADDING, C.W. ( METAL COMPOSITE, LIGHT GREY, 'REYNOBOND, ACCUMET 2007' )
2. NEW GLAZING PANELS, C.W. ( CLEAR ) EXIST'G BLDG. LOW 'E' ON E., W. & S.
- 2a. NEW GLAZING, WINDOW WALL (CLEAR) NEW ADDITION, LOW 'E' ON W., E. & S.
3. NEW EXTERIOR WALL CLADDING ( METAL, BLACK, 'DRI-DESIGN' )
- 3a. NEW EXTERIOR WALL CLADDING ( METAL, WHITE, 'DRI-DESIGN' )
- 3b. NEW EXTERIOR WALL CLADDING ( METAL, LIGHT GREY, 'DRI-DESIGN' )
- 3c. NEW EXTERIOR WALL CLADDING ( METAL, COLOUR # 1, 'DRI-DESIGN' )
- 3d. NEW EXTERIOR WALL CLADDING ( METAL, COLOUR # 2, 'DRI-DESIGN' )
4. REUSED GLAZING, C.W. ( TINTED, BLACK ) SOUTH FACE UPPER FLOOR
5. ENTRY CANOPIES ( METAL, PAINTED RED & GLAZED )

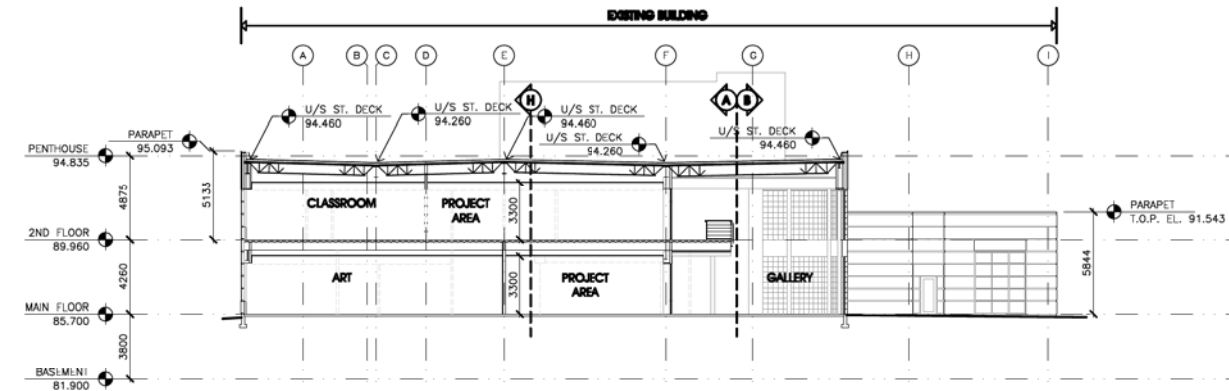




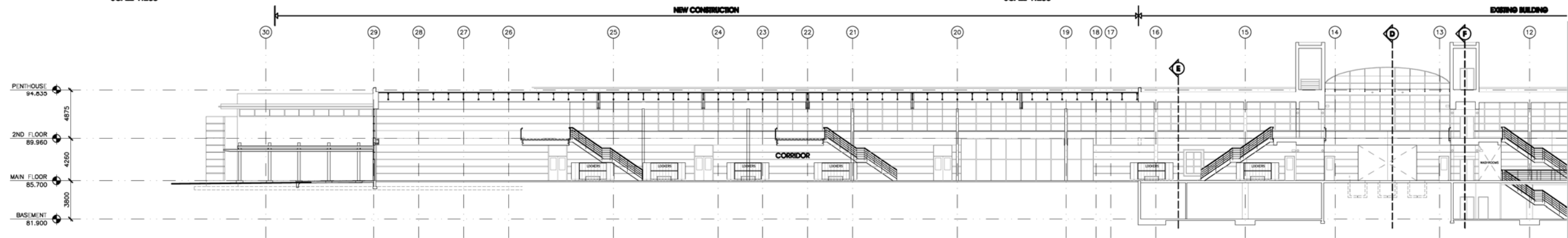
**SECTION A**  
SCALE 1:200



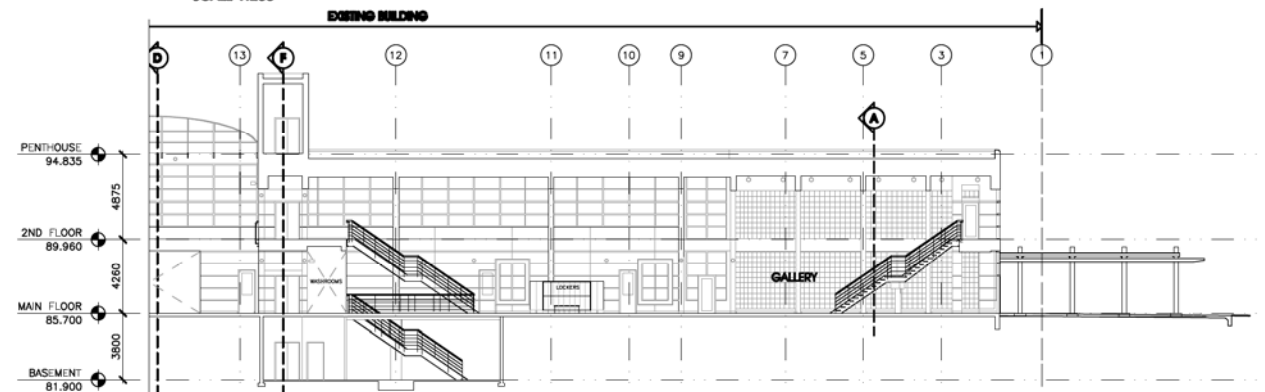
**SECTION A (CONT.)**  
SCALE 1:200



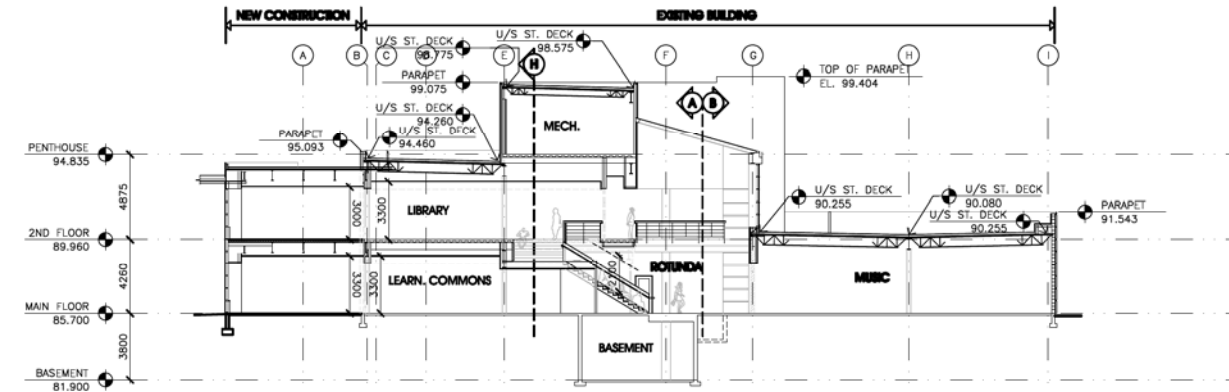
**SECTION B**  
SCALE 1:200



**SECTION C (CONT.)**  
SCALE 1:200

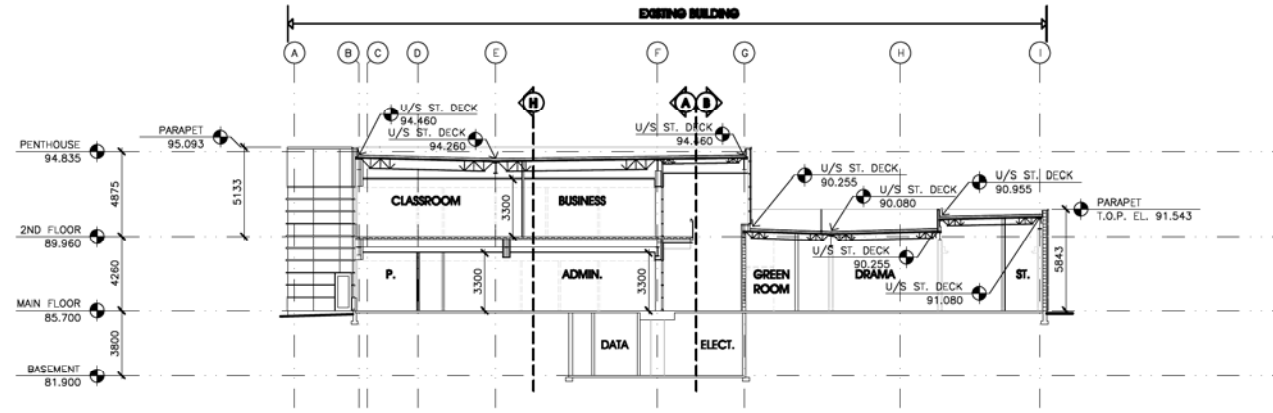


**SECTION C**  
SCALE 1:200

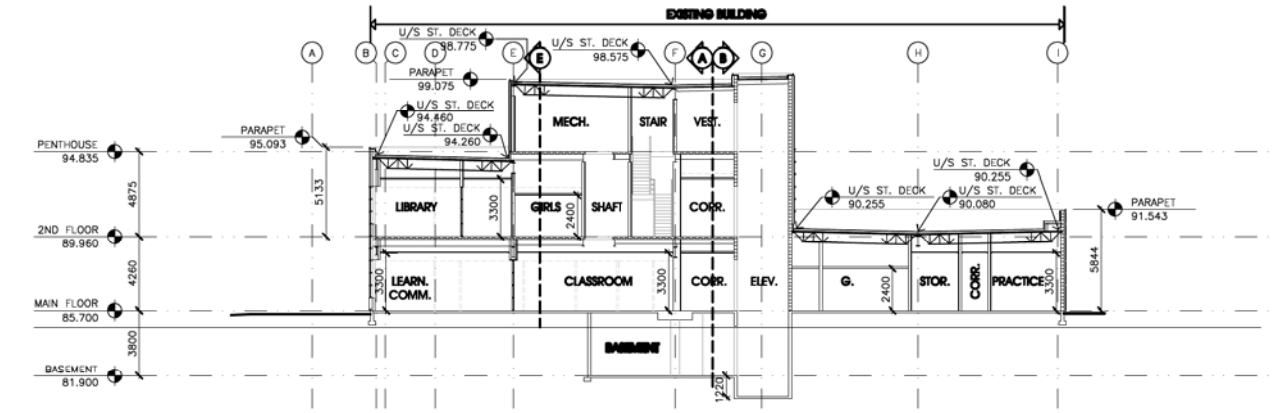


**SECTION D**  
SCALE 1:200

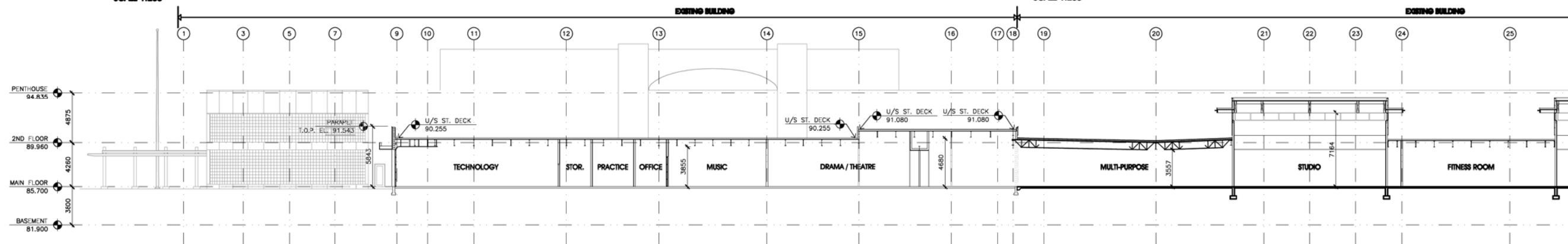
DATE: 27 Jan, 2010



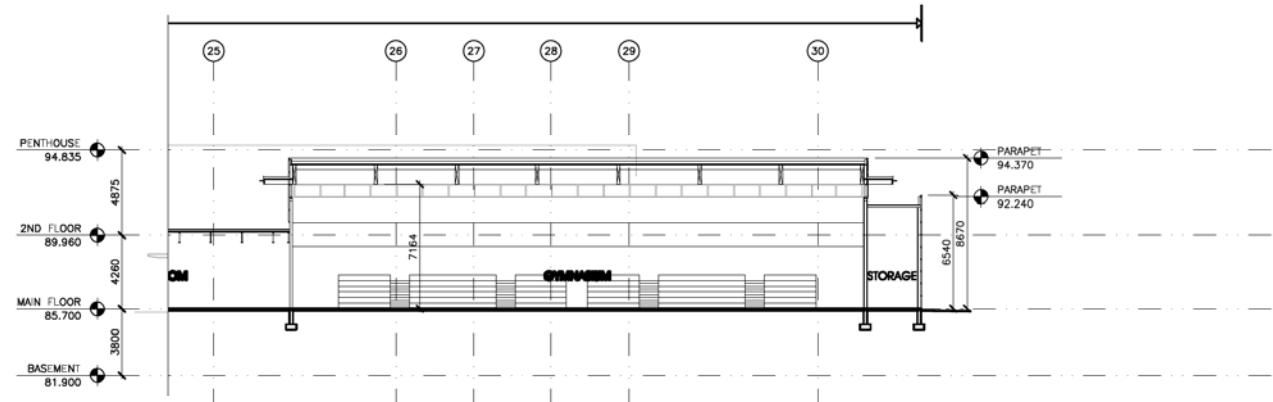
**SECTION E**  
SCALE 1:200



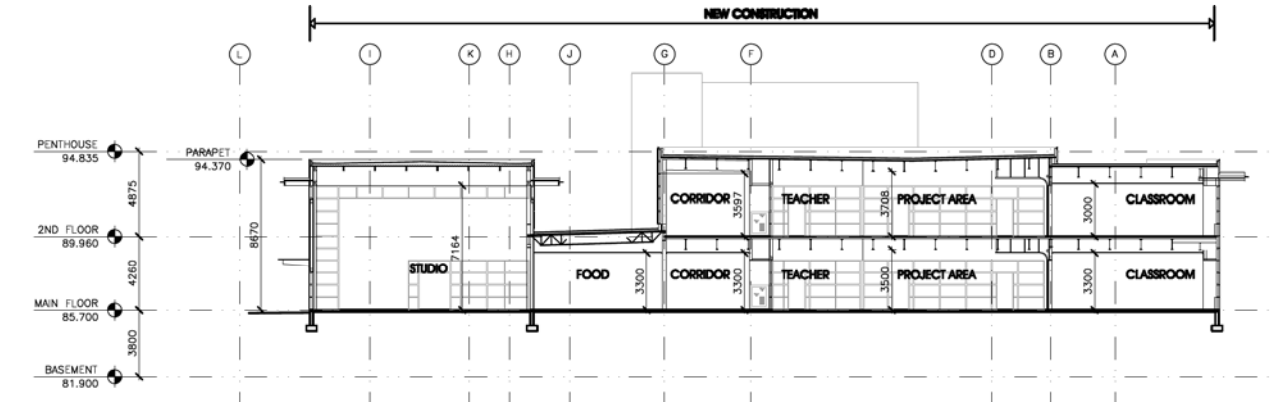
**SECTION F**  
SCALE 1:200



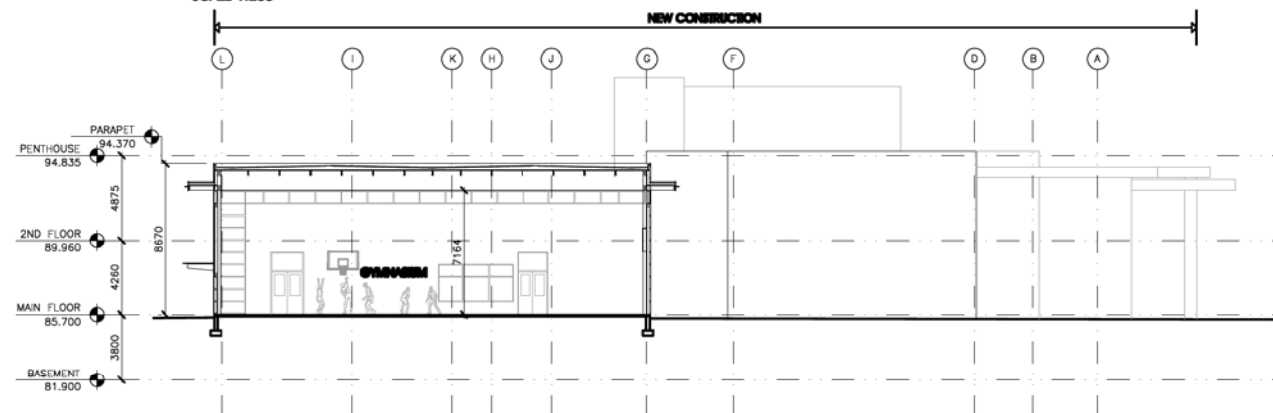
**SECTION G**  
SCALE 1:200



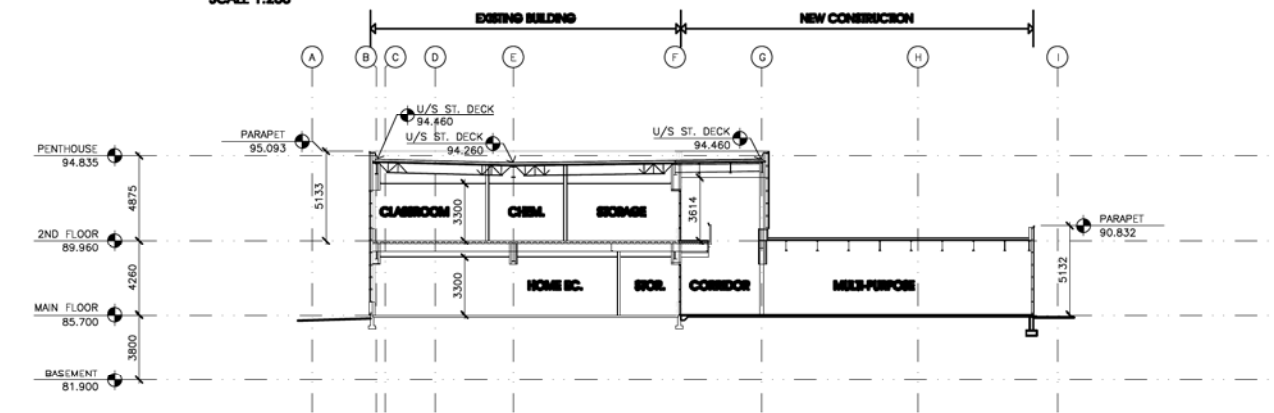
**SECTION G (CONT.)**  
SCALE 1:200



**SECTION H**  
SCALE 1:200

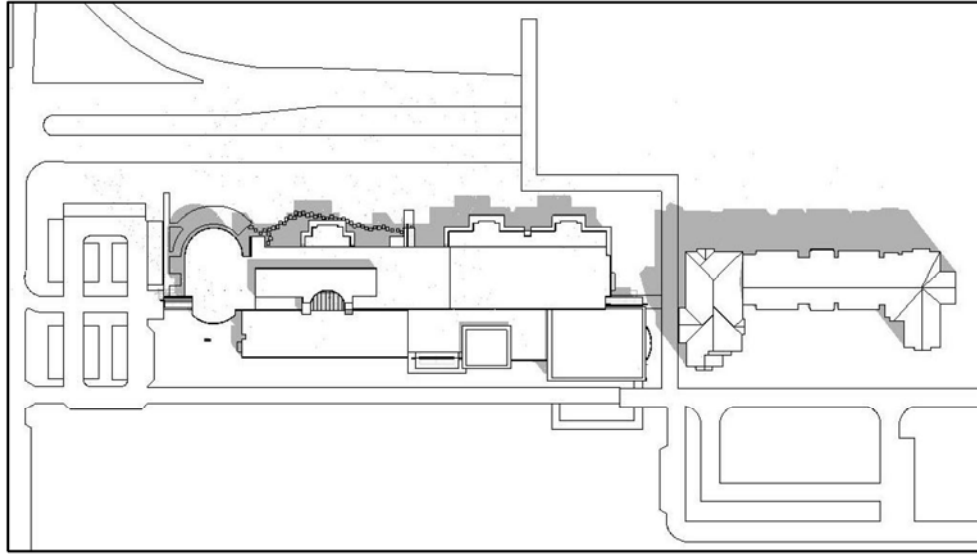


**SECTION J**  
SCALE 1:200

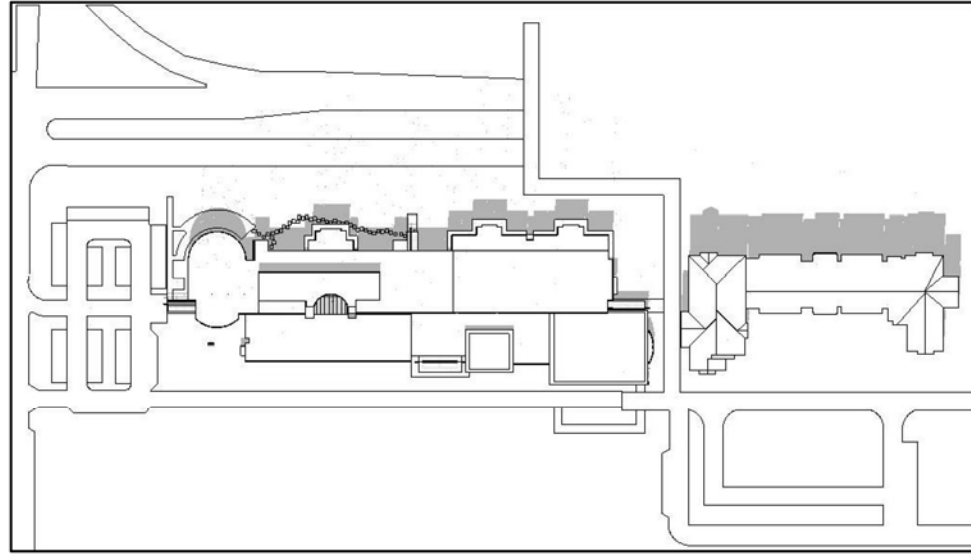


**SECTION K**  
SCALE 1:200

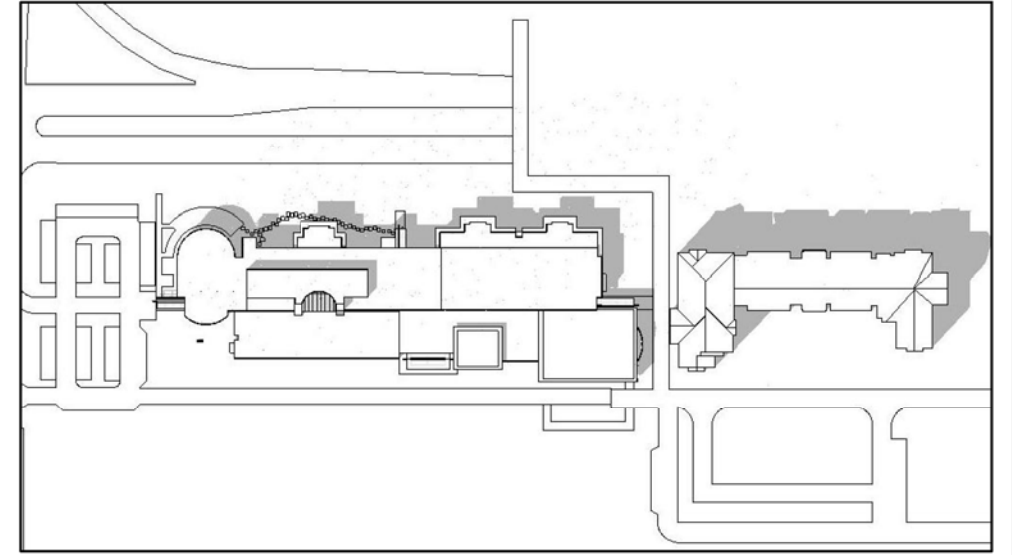
B7C F:\100-231\_n3 University Hill Secondary



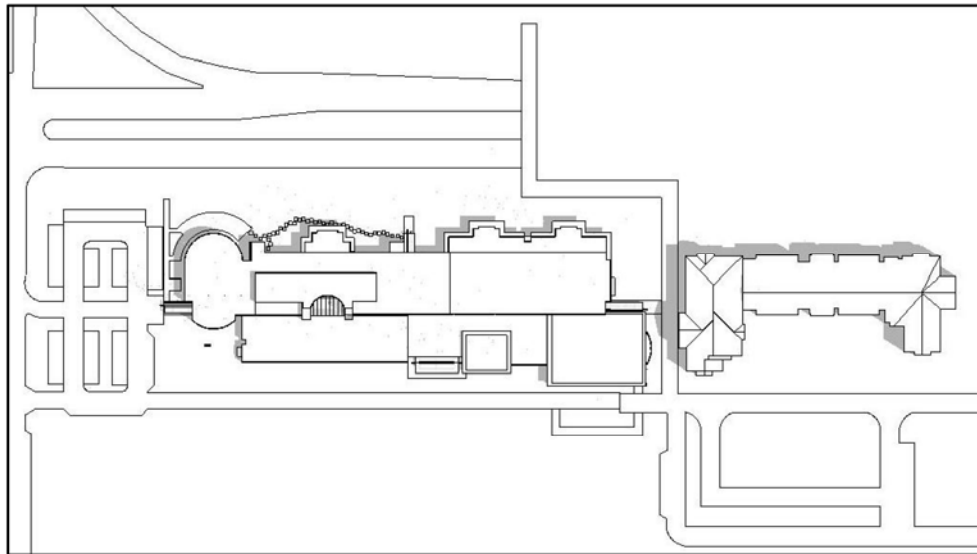
**SPRING 10:00 AM**



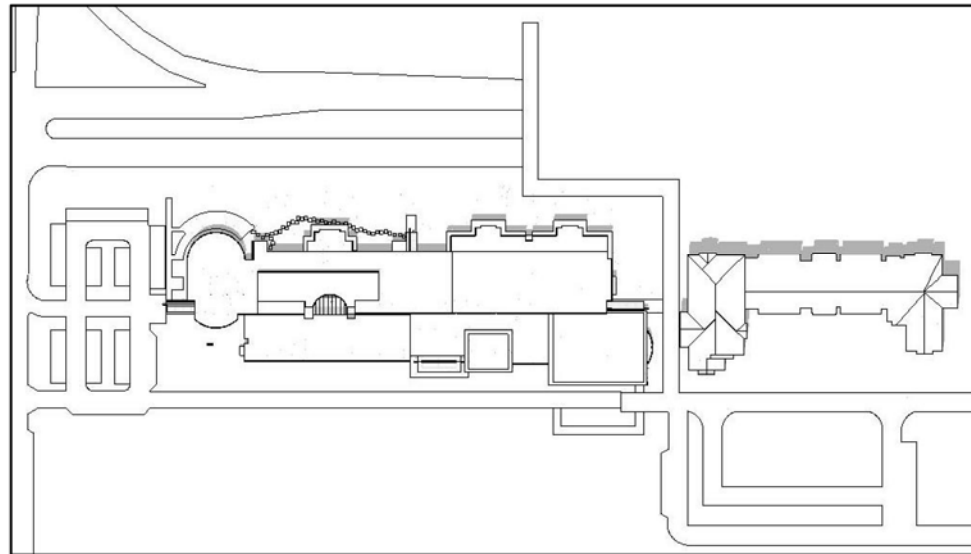
**SPRING 12:00 PM**



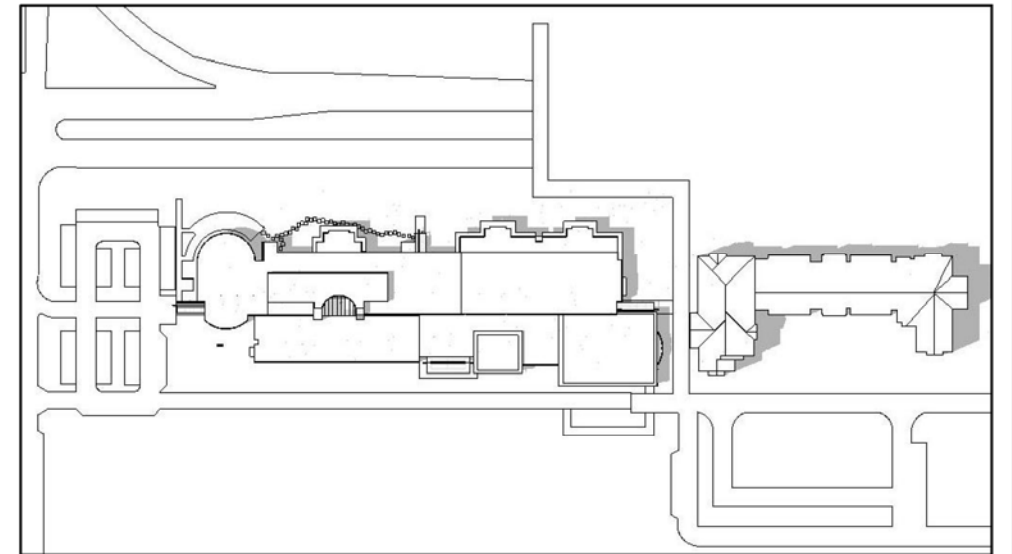
**SPRING 2:00 PM**



**SUMMER 10:00 AM**



**SUMMER 12:00 PM**



**SUMMER 2:00 PM**