

Theme: Bones, Bones, Bones

Date: October 27, 2020

Hello StrongStart families,

Today's email is put together by Ms. Doris (from Selkirk).

Bones and skeletons, are you afraid of them? Hopefully, after today's activities and songs, you will find that they are not so scary after all 😊 First, let's join Ms. Doris on the piano for some Halloween Dance Fun (like Old Macdonald Had a Haunted House)

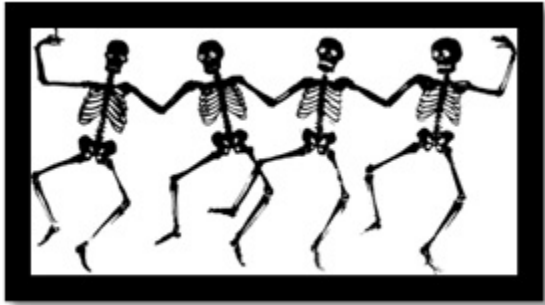
- <https://youtu.be/aF69Y7HWr6l>



Do you know how many bones are in your body? **There are 206 bones in your body!** How about animals? Do you think animal skeletons are different than humans? Check out the attached PDF for some different animals and their skeleton structures!

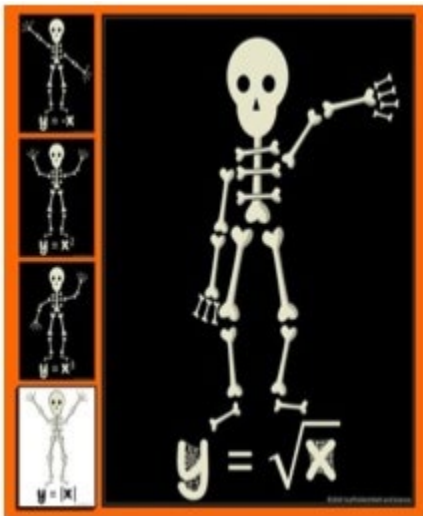


To learn more about skeletons and bones, join Ms. Doris for a book and a bone dance - <https://youtu.be/WQSIP3p6Lrc>

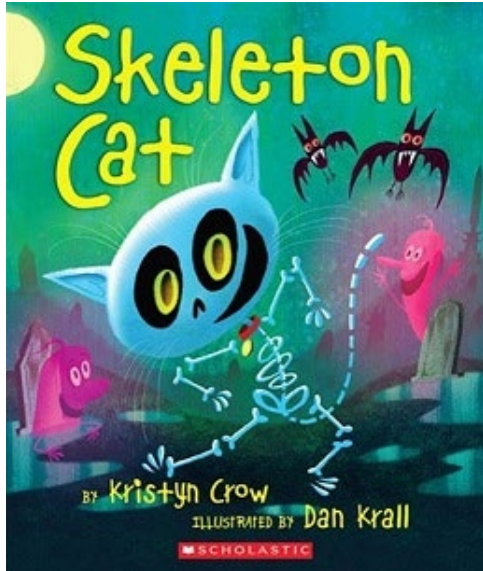


Here are some skeleton art ideas you can do at home. You will need some Q-Tips, glue and paper.

- Hand X-Ray Craft: Trace your child's hand onto paper. Glue on Q-Tips for the bones.
- Different Animal Skeleton: Trace out different animal outlines (e.g., fish, cat) and glue Q-Tips as the skeleton.



To wrap up this email, let's read a book called "Skeleton Cat" by Kristyn Crow and Dan Krall - https://youtu.be/xHh7d_KwJ3M.



Have a safe and fun Halloween everyone! If you are having a Halloween party at home this weekend, here are a couple fun dance songs to add to your playlist.

- **The Skeleton Dance by Bounce Patrol** - https://youtu.be/NxH5X_r4fwU
- **Skeleton Band by Pinkfong** - <https://youtu.be/oiz3kJVZI6E>



Vancouver Public Library has Facebook Live Storytimes, Zoom Babytimes and Virtual Storytime on YouTube.

- Facebook: www.facebook.com/vancouverpubliclibrary
- YouTube: www.youtube.com/user/vancouverlibrary
- For schedules: www.vpl.bibliocommons.com/events



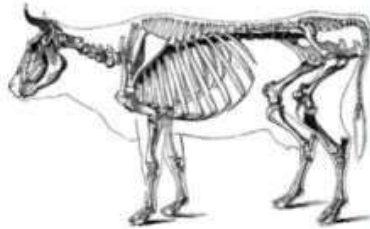
Matching Skeletons to Animals

PoS - identify that humans and some animals have skeletons and muscles for support, protection and movement
WS - pupils should make systematic and careful observations using straightforward scientific evidence to answer questions or to support their findings.

Match the following animals with their skeleton. Beneath each match write down the clues and evidence that helped you to match it.



Animal Skeleton



Matching Cards



Teach
Beside
Me