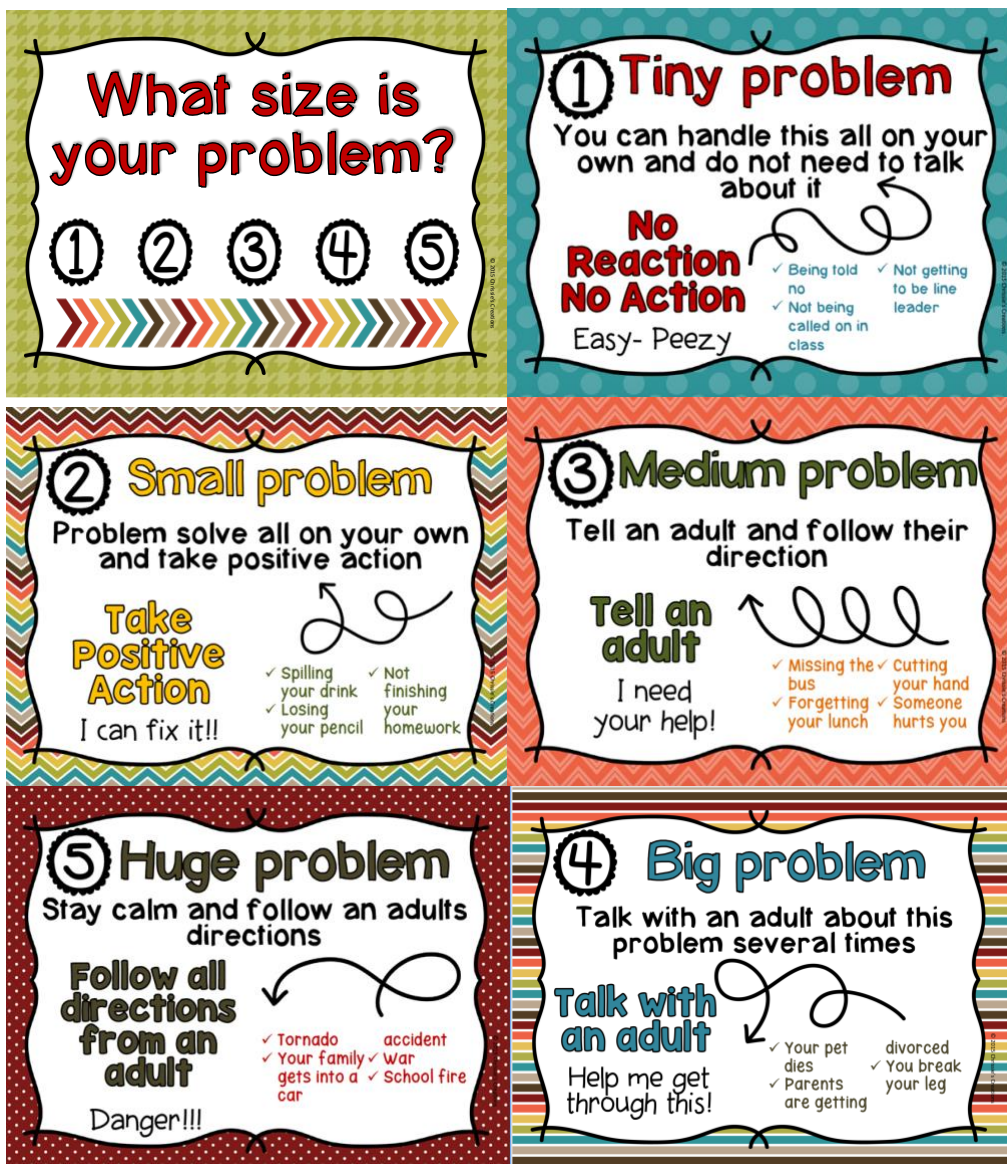


Good afternoon Osler Community

This week has flown by! I attribute this to having the Family Day Monday off from school. Talking to many of the students they were happy to see the snow in their backyards and enjoyed playing in it. I am grateful to have these weather days out of the norm when we have been spending our days so close to home.

During the school's Professional Development Day last Friday we as a staff were focusing on Social Emotional Learning. The CASEL (Collaborative Academic Social Emotional Learning) framework provides us with strategies and practice to support our students' social emotional needs. One area all staff will be working on is common language inside the school and on the playground. Using Size of the Problem language will help students identify their need and access their inner toolbox to find appropriate strategies. I have included a visual here that many teachers will be using.



It may be something that you would like to try at home!

Each year, the Vancouver School District engages stakeholders and the public to provide feedback and inform the next fiscal year's budget. We are asking for your input on our 2021-2022 budget. Using an online engagement survey, the VSB is offering an easy-to-access opportunity to participate. We recognize the importance of hearing from our community's diverse voices, and we value your views on how to balance our 2021-2022 budget.

Please consider completing the survey which I have attached to this email.

Enjoy your weekend,

Rosemary Thomas  
Principal at Osler