



# Bayview Elementary

## Code of Conduct

- \* **Be Safe**
- \* **Be Fair**
- \* **Be Kind**

Bayview has a set of guidelines for conduct and expectations that make up the three Care Statements: **Be Safe, Be Fair, Be Kind**. These guidelines reflect the school's philosophy creating a safe, caring, mutually respectful and welcoming learning environment.

These expectations apply to behaviour at school, during school-organized or sponsored activities, and behaviour beyond these times (including on-line behaviour) that negatively impacts the safe, caring or orderly environment of the school, and/or student learning.

Please discuss this document with your child in order that your child understands that we aim to live up to the Code of Conduct at school and when participating at school events.

- ◆ Help your child talk about problems and issues.
- ◆ Talk to your child's teacher if a problem arises.
- ◆ Encourage your child to take responsibility for his/her belongings, work and behaviour.
- ◆ Help your child solve problems peacefully.
- ◆ Support your child in his/her schoolwork.

**THE BEHAVIOURS LISTED ON THE BACK  
OF THIS PAMPHLET ARE EXAMPLES ONLY  
AND NOT AN ALL-INCLUSIVE LIST.**

### Consequences

Consequences will be consistent, preventative and restorative rather than punitive, wherever possible and appropriate. The sequence and nature of consequences of unacceptable behaviour takes into account the students' age, maturity, and special needs..

As circumstances warrant, any or all of the following may be notified:

- |                     |                        |
|---------------------|------------------------|
| * Principal         | * Staff                |
| * Counsellor        | * District Staff       |
| * Parents/Guardians | * Community            |
| * Other schools     | * Police Liaison       |
| * 911               | * Ministerial Agencies |

#### 1) Initial or minor misconduct:

- |                            |   |
|----------------------------|---|
| *Discussion with an adult  | *Referral to classroom teacher  |
| * Reminder of expectations | *Possible restorative consequence to encourage positive behaviour and mend relationships. |

#### 2) Repeated or moderate misconduct:

- |  |                        |
|--|------------------------|
| *Classroom teacher involvement                                 | *Principal involvement |
| * Loss of privileges, confiscation or restorative consequence. |                        |
| *Parent involvement  |                        |

#### 3) Chronic or major misconduct:

- |  |                              |
|--|------------------------------|
| * Classroom teacher involvement        | * Principal involvement      |
| * Parent involvement                   | * Behaviour plan development |
| * Possible informal/formal suspension. |                              |

**Suspensions:** In accordance with the School Act, Sec. 85(2)(ii) and (d), the Board authorizes the Principal or designate of any school in the district to suspend a student from attendance at school for up to five days.

#### Suspensions may be for the following reasons:

- \* because a student is willfully and repeatedly disrespectful to a teacher or to any other employee of the Board carrying out responsibilities approved by the Board.
- \* because the behaviour of the student breaches the District Code of Conduct or policy and/or has a harmful effect on others or the learning environment of the school.
- \* because the student has failed to comply with the School Code of Conduct..

Suspensions over five days are made in consultation with the appropriate Director of Instruction as per District Policy:

(<http://www.vsb.bc.ca/district-policy/jgd-r-district-student-code-conduct-regulation>)

### Additional Information

We believe that as our students become older, more mature, and move through successive grades, our expectations of them should rise. There should be increasing personal responsibility and self-discipline. There will also be increasing consequences for inappropriate behaviour.

Special considerations may apply to students with special needs students having a disability of an intellectual, physical, sensory, emotional or behavioural nature.

Bayview School promotes the values expressed in the **BC Human Rights Code** respecting the rights of all individuals in accordance with the law – prohibiting discrimination based on race, colour, ancestry, place of origin, religion, marital status, family status, physical or mental disability, sex or sexual orientation – in respect of discriminatory publication and discrimination in accommodation, service and facility in the school environment.

Bayview will treat seriously behaviour or communication that discriminates based on race, colour, ancestry, place of origin, religion, marital status, family status, physical or mental disability, sex or sexual orientation (prohibited grounds set out in the BC Human Rights Code).

The school will take all reasonable steps to prevent retaliation against a student who has made a complaint of a breach of a code of conduct.

### Who You Can Call

**604-713-5433 (school office)**

- ⇒ Your child's teacher
- ⇒ Principal
- ⇒ Area Counsellor
- ⇒ Aboriginal Education Enhancement Worker
- ⇒ Multi-Cultural Language Worker

Updated July 2017

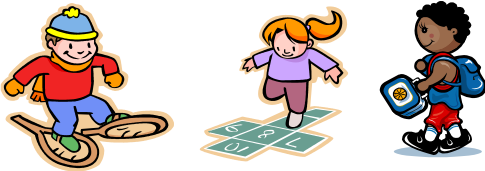


# Bayview Elementary Code of Conduct

## Be Safe

### Acceptable Conduct

- \* Stay on school grounds and in supervised areas.
- \* Deal with conflict in peaceful ways -use your words/or get adult help.
- \* Walk safely, don't run inside the school.
- \* Be responsible for your own safety by following the school rules.
- \* Use technology in a safe, respectful way.
- \* Keep your hands, feet & body to self.



### Unacceptable Conduct\*

- \* Hurting others.
- \* Pushing, hitting, kicking etc. fighting or playing roughly.
- \* Littering, not cleaning up.
- \* Vandalism, damage, or theft
- \* Sliding, climbing, jumping dangerously.
- \* Running inside.
- \* Weapons— toy or real.
- \* Illegal substances, lighters, firecrackers
- \* Refusing to follow an adult's directions.

## Be Fair

### Acceptable Conduct

- \* Treat others as you like to be treated.
- \* Share with people, wait your turn.
- \* Invite others to play.
- \* Help others.
- \* Be open to others' view and opinions.
- \* Pick up after yourself. Leave things/ places better than you found them.
- \* Be on time, & prepared.
- \* Try your best.



### Unacceptable Conduct\*

- \* Excluding others.
- \* Interrupting, not listening.
- \* Wasting resources or taking more than is needed. Littering
- \* Discriminating against someone based on race, gender, religion, or sexual orientation.
- \* Not being cooperative.
- \* Unfair play, not following game rules

**THE BEHAVIOURS LISTED ARE EXAMPLES ONLY AND NOT AN ALL-INCLUSIVE LIST.**

## Be Kind

### Acceptable Conduct

- \* Use good manners.
- \* Be friendly & welcoming.
- \* Use positive talk with each other.
- \* Respect school and personal property.
- \* Care for yourself, others and your environment.
- \* Support each other as positive bystanders.



### Unacceptable Conduct\*

- \* Using hurtful words, rude body language, and or backtalk.
- \* Swearing, cheating, lying.
- \* Hurting other's feeling by words or actions.
- \* Teasing, "Putting down", "Just kidding"
- \* Encouraging or pressuring others to break school rules.
- \* Spreading gossip or rumours.
- \* Arguing, talking back to an adult.