

Tennyson New Building Entry and Exit Doors

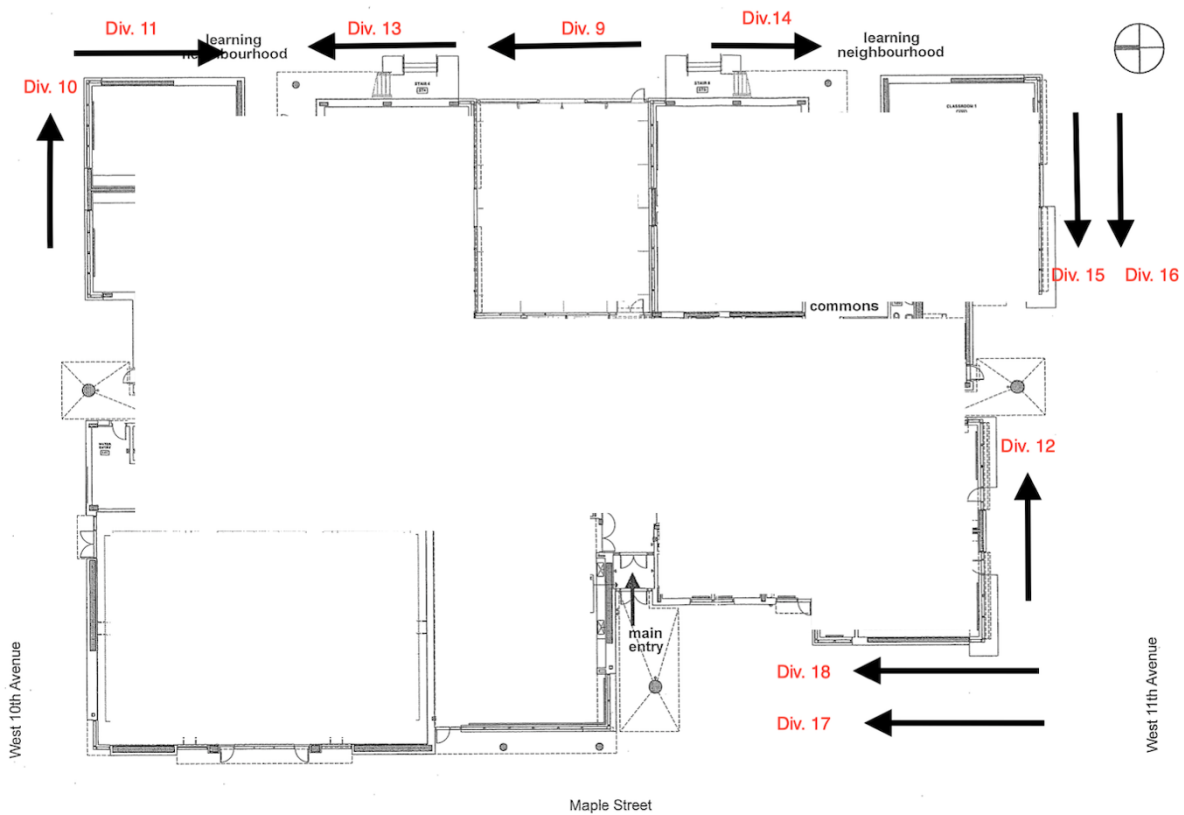
For Monday, Dec 7th (am only): Students go to the lineups they know at the old building.

Dec 7th (pm) and onwards: These are the general areas for lineups and doors that students will use to enter and exit the building, subject to slight shift if needed.

Parents/Guardians/Families, please remember that we are asking you to wait and wave from off the grounds as we work out our space. For Health & Safety reasons we need to ensure adequate space for students and staff on the grounds.

Ground Floor (Divisions 9-18)

The arrows are the general line-up areas, with the arrows pointing to the entrance that the Division anticipates using. Teachers may shift this slightly if needed.



Second Floor (Divisions 1-8)

The arrows are the general line-up areas, with the arrows pointing to the entrance that the Division anticipates using. Teachers may shift this slightly if needed. Intermediate classes anticipate using the two exterior stairwells at the back of the school for entry and exit.

